

fatigue, headaches, coughs, and unusual skin sores.^[47] Additionally, in children, there were reports of poor cognitive development.^{[44][46][47]} There have also been studies of the health effects of PCBs in the general population and in children of mothers who were exposed to PCBs.

- **Animals**

Animals that eat PCB-contaminated food even for short periods of time suffer liver damage and may die. In 1968 in Japan, 400,000 birds died after eating poultry feed that was contaminated with PCBs.^[43] Animals that ingest smaller amounts of PCBs in food over several weeks or months develop various health effects, including anemia; acne-like skin conditions (chloracne); and liver, stomach, and thyroid gland injuries (including hepatocarcinoma). Other effects of PCBs in animals include changes in the immune system, behavioral alterations, and impaired reproduction. PCBs are not known to cause birth defects in humans, although those that have dioxin-like activity are known to cause a variety of teratogenic effects in animals.

- **Effects during pregnancy/breastfeeding**

Women who were exposed to relatively high levels of PCBs in the workplace or ate large amounts of fish contaminated with PCBs had babies that weighed slightly less than babies from women who did not have these exposures. Babies born to women who ate PCB-contaminated fish also showed abnormal responses in tests of infant behavior. Some of these behaviors, such as problems with motor skills and a decrease in short-term memory, lasted for several years. Other studies suggest that the immune system was affected in children born to and nursed by mothers exposed to increased levels of PCBs. The most likely way infants will be exposed to PCBs is from breast milk. Transplacental transfers of PCBs were also reported.

Studies have shown PCBs alter estrogen levels in the body and contribute to reproduction problems. In the womb, males can be feminised or the baby may be intersex, neither a male nor a female. Also, both sets of reproductive organs may develop. More instances of this are being reported. Biological magnification of PCBs has also led to polar bears and whales that have both male and female sex organs and males that cannot reproduce. This effect is known as endocrine disruption. Endocrine disrupting chemicals (EDCs) pose a serious threat to reproduction in top-level predators.

[edit] Cancer link

A few studies of workers indicate PCBs were associated with specific kinds of cancer in humans, such as cancer of the liver and biliary tract. PCBs also have been shown to mimic the action of estrogen in breast cancer cells and can enhance breast carcinogenesis.^[48] Rats that ate food containing high levels of PCBs for two years developed liver cancer. The Department of Health and Human Services (DHHS) has concluded PCBs may reasonably be anticipated to be carcinogens. The EPA and the International Agency for Research on Cancer (IARC) have determined that PCBs are probably carcinogenic to humans. PCBs are also classified as probable human carcinogens by the National Cancer Institute, World Health Organization, and the Agency for Toxic Substances and Disease Registry. Recent research by the National Toxicology Program has confirmed PCB126 (Technical Report 520) and a binary mixture of PCB126 and PCB153 (Technical Report 531) are carcinogens.

26 (11)

ACT FB Fire Investigation Unit

Incident No. 037334 - 1509 - 2011
 Address. 60 DACRE ST. MITCHELL
 Date. 19.9.2011
 Time. From 1132-
 Camera Type D300 -

- N/W corner

Photo No.	Description.
1	Front entrance - 60 Dacre st -
2	Front entrance " "
3	ST EAST Front 60 Dacre st -
4	Front roller door -
5	Front NT EAST corner
6	NTH roller door - front -
7	NTH EAST WALL (From EAST) YARD
8	NTH EAST BLD WALL.
9	Scene shot from: N/w
10	Scene shot from N/w (2).
11	Scene shot from west side.
12	Scene shot from west -
13	Scene shot west / S/w.
14	Southern BLD wall from west
15	Scene shot from: South. - 1214 HRS -
16	BROWTO Scene Shots:
	↓ 14 Shots
30	BROWTO Surrounding Roof top Shots:
	→ 10 Shots

**FIRE BRIGADE
INVESTIGATION UNIT
FIELD NOTES**



25
10

Operations Manager
Mobile: -

- OFFICE: -
- DIRECT: -
- FAX: -
- EMAIL: -
- WEB: www.esigroup.net
- 60 Dacre St Mitchell ACT 2911, Australia
- PO Box 156 Mitchell ACT 2911, Australia

AIRS No: 037 334 Date: 19-9-11 Time: From 1100 hrs.

Investigating Officer:

Mitchell Chemical Fire.

Investigation SOP - AFP job?

PCBS ✓ HB 76 - splash suit & SCBA

Contact

Workcover

Office Regulatory Services (on what basis / have practices changed)

Items to collect

phone ✓

Comms log ✓

building plans / street map ✓

Contact details owners -

MSDS from hazmat

History of calls from

PROTECTED

16 (7)

**SEMSOG
OUTCOMES**

Mitchell Hazmat Incident

MEETING 4

**17 September 2011 at 0900hrs
ESA Headquarters, 9 Amberley Avenue Fairbairn**

1) OPENING REMARKS (JACSD)

Chair welcomed members to the 4th SEMSOG meeting.

2) SITUATION UPDATE (ESA/HD/ESDD)

ESA/HD/ESDD provided an overview of the response to the incident.

3) STRATEGIC POLICY ISSUES / FUTURE DIRECTION (ALL)

a. Exclusion Zone (*discussed with item b*)

b. Assessment of Environmental Impact

- Consistent with the need for confidence that the exclusion zone and the broader area affected by the plume is safe, EPA advise that detailed testing is being undertaken over the weekend jointly with NSW EPA and with the assistance of ACTSES.
- The total exclusion zone in Mitchell remains unchanged; however the ACTFB footprint has been reduced to an area incorporating the boundaries of Gungahlin Dr, Wells Station Dr, Hoskins St and Dacre St.
- Lead agency for the remaining area within the exclusion zone is EPA/ESDD.

c. Health advice for hospitals and the public

- Public health issues within the exclusion zone are being addressed.
- Access to hospital linen, supplies and clinical waste disposal are of increasing concern for the continued operation of ACT hospitals.
- ACT Health has developed public messages addressing community concerns regarding public health issues.

d. Supplies to hospitals (*covered under discussion of agenda item above*)

PROTECTED

PROTECTED

e. Handover/Securing of Site/Process for Monday

- Handover and securing of the site was detailed by the ACTFB Chief Officer and involves EPA/ACTP/ACTFB and WorksafeACT.
- These agencies will be conducting their individual investigations and will prepare reports. ACT Policing and ACT Fire Brigade will prepare a detailed report for the coroner.
- It was agreed that the situation relating to the status of the exclusion zone on Monday needs to be clarified by Sunday and SEMSOG will meet at 10am, Sunday to determine relevant issues.

f. Public Messaging

- Public messaging will include details of environmental testing, the status of the exclusion zone noting the need to take a precautionary approach, health advice and continuation of normal services such as schools and transport.

g. Legislative Assembly

- QTBs to be prepared by individual agencies with overall coordination by ESDD.
- Statement by CM/Minister.

h. National Early Warning System

- ESA Commissioner advised that he was reviewing the data relating to the system and reiterated that NEWS will never have 100% delivery/accuracy.
- Members noted that NEWS was one of a number of means of issuing alerts to the community.

4) OTHER BUSINESS

Nil

NEXT MEETING

1000hrs Sunday 18 September 2011

14 (6)

From:
Sent: Friday, 16 September 2011 10:17 PM
To:
Cc:
Subject: 2200 sitrep
Attachments: 2100 SITREP.pdf

Gents

IC has moved forward from HQ to Mitchell at this time. is IC.

Handover notes and info with Comcen SO for AM.

I have a hand written note to forward sitrep to Chief Minister. Not sure if this was appropriate or who requested so will leave to to forward as required.

Cheers

ACT Fire & Rescue



Ph:
Mob:

**GPO Box 158
CANBERRA ACT 2601**

PROTECTED

5
13

**SEMSOG
OUTCOMES / ACTION ITEMS**

Mitchell Hazmat Incident

MEETING 3

**16 September 2011 at 1600hrs
ESA Headquarters, 9 Amberley Avenue Fairbairn**

Action Items are indicated by an 'A' with the responsible agency/directorate.

1) OPENING REMARKS (JACSD)

Chair welcomed members to the 3rd SEMSOG meeting.

2) SITUATION UPDATE (ESA/HD/ESDD)

ESA/HD/ESDD provided an overview of the response to the incident.

3) STRATEGIC POLICY ISSUES / FUTURE DIRECTION (ALL)

a. Regulation of hazardous materials (*covered under discussion of other agenda items*)

b. Dispersed chemicals within Mitchell

- Ash falling into the area is considerably widespread but contained within Mitchell.
- Contamination is primarily an EPA issue but is working closely with ESA. The EPA advises they have capacity to test and provide advice on decontamination.
- At this time there is no risk outside of the exclusion area.
- Exclusion zone will undergo an ACTFB formal assessment in consultation with EPA and HD prior to lifting any zoning restrictions. (A - ACTFB)
- The exclusion zone will remain in place until at least Monday morning.
- Laboratory testing to take place, noting that there is no need to test outside of the exclusion zone. (A - EPA)

c. Cumulative toxin advice to first responders/community

- Toxins are contained in ash and cloud, and contains sodium peroxide.
- Any impacts of swallowing or inhaling ash/dust type substance would be short-term.
- Exposure to the skin, eyes, inhaling or ingestion of the substance is to be avoided.
- Phosgene was detected in only one reading.

PROTECTED

PROTECTED

- Whilst sodium peroxide and phosgene have short term health impacts, there is still to be the identification of any other chemicals and the effects associated. This relates to inside the exclusion zone. (A – HD/EPA)
- d. Other Environmental impact (*covered under discussion of other agenda items*)
- e. Public Messaging/ Social media / Canberra Connect
- Public concern on the effects of the ash-fallout.
 - Mitchell exclusion zone to be in place to at least Monday morning. (A - PIC)
 - Canberra Connect are seeking to acquire Telstra staff to take over from call centre staff. (A – TAMSD)
 - PIC to draw across key messages from environment and health. (A – PIC)
 - Prior to lifting the exclusion zone messaging to the public needs to cover what they need to do to clean up, what protective measures they need to take, what are the signs of exposure, what to do if exposed, and who to contact for more information. (A – EPA/HD/PIC)
- f. Emergency Warning System
- Public expectations are that the message is to be accurate and error free, noting that it will never reach everybody and is not a 100% solution, improved over time.
 - Need to address these issues before fire season. (A - ESA)
 - Need for data reports to become available as soon as possible. (A - ESA)
- g. Chief Health Officer advice on toxic chemicals – to hospitals/public
- Completed.
 - No increase in any health related issues/symptoms at TCH.
 - Requirement to continually monitor and advise on relevant websites accordingly on health advice, including links on the ESA website to relevant health information. (A – HD/ESA)
- h. Disruption to weekend services/events/ transport (i.e. memorial service/sporting events/ Mitchell Waste Centre/ funeral services)
- Public transport services to continue except exclusion zone.
 - Funeral services to be rescheduled for next week. (A – TAMSD)
 - Mitchell Waste Centre will be closed whilst the exclusion zone is in place. Additional resources have been put in place at Mugga Lane. (A – TAMSD)
 - War memorial – reshaping event if in area – details unknown but to be cancelled. (A - SEMB)
 - Possible impact on floriade – ie businesses setup at EPIC.
- i. Business impacts / financial implications
- Contact Chamber of Commerce and advise accordingly (A - SEMB)
 - Loss of profit/asset damage.

11

PROTECTED

- Possible issue re ACT Govt assistance.
 - TD talk with insurers re business interaction (A - TD)
 - Advice to Ministers/ Cabinet to be provided on hardship to businesses, what has occurred in other jurisdictions, quota/trigger for payments (A - TD)
- j. Child care fees and possible compensation
- TD and CSD to discuss possible compensation and issues associated. (A - TD/CSD)
- k. Evacuation Centre
- Opened once contacted, closed accordingly.
 - Available to be reopened if required.
- l. Supplies to Hospitals - Capital Linen Services
- Business continuity issues identified/reinforced – several key services provided in Mitchell.
 - Waste disposal services will continue on an as needs basis.
 - Linen alternative supplies – supplies organised via NSW.
 - As far as possible hospitals will reduce the changing of linen.
 - Surgical supplies – seeking alternates through NSW.
- m. Mail Services
- ACT Government mail services to make alternate arrangements until Monday.
 - To advise Aus post that Mitchell will be part of the exclusion zone until at least Monday morning. (A - SEMB)
- n. Investigation
- In accordance with normal procedures (A – ACTFB/ACTP/WORKSAFE ACT).
 - Presence/ visibility of ACT Police will be in and around Mitchell area.

4) OTHER BUSINESS

Nil

NEXT MEETING

0900hrs Saturday 17 September 2011

PROTECTED

Mitchell Exclusion Zone

Map Identification
Map Number EPA
Date Prepared 18/08/2011 09:20
Drawn By LS
Projection UTM Zone 18 (GDA 84)
Coordinate System 84 UTM
Scale 1:5000 @ A0



Disclaimer
Data supplied by various organisations under
various licences. The information is provided
AS IS. The information is not to be used for
any purpose other than that for which it was
supplied. The information is not to be used for
any purpose other than that for which it was
supplied. The information is not to be used for
any purpose other than that for which it was
supplied.



ESAS/2011/05/000001
ACT Emergency Services Agency
© ACT Government 2011



Mitchell Exclusion Zone

Map Identification EPA
Map Number 10002011 0020
Date Prepared LS
Drawn By
Projection NAD 83, UTM Zone 18N
Covered Area 1:4000 @ A3
Scale



Disclaimer
Data supplied by various authorities under
various licenses. The user of this information
is advised to verify the accuracy of the data
before using it for any purpose. The user
accepts all responsibility for any errors or
omissions. The user of this information
is advised to verify the accuracy of the data
before using it for any purpose. The user
accepts all responsibility for any errors or
omissions.



ACT Environment and Planning Authority
100 Macquarie Street
Canberra ACT 2600
© ACT Environment and Planning Authority 2011



© 2011 ACT Environment and Planning Authority

EPA Sampling Sites



Map Identification

Map Number EPA
Date Prepared 18/09/2011 09:50
Drawn By LS

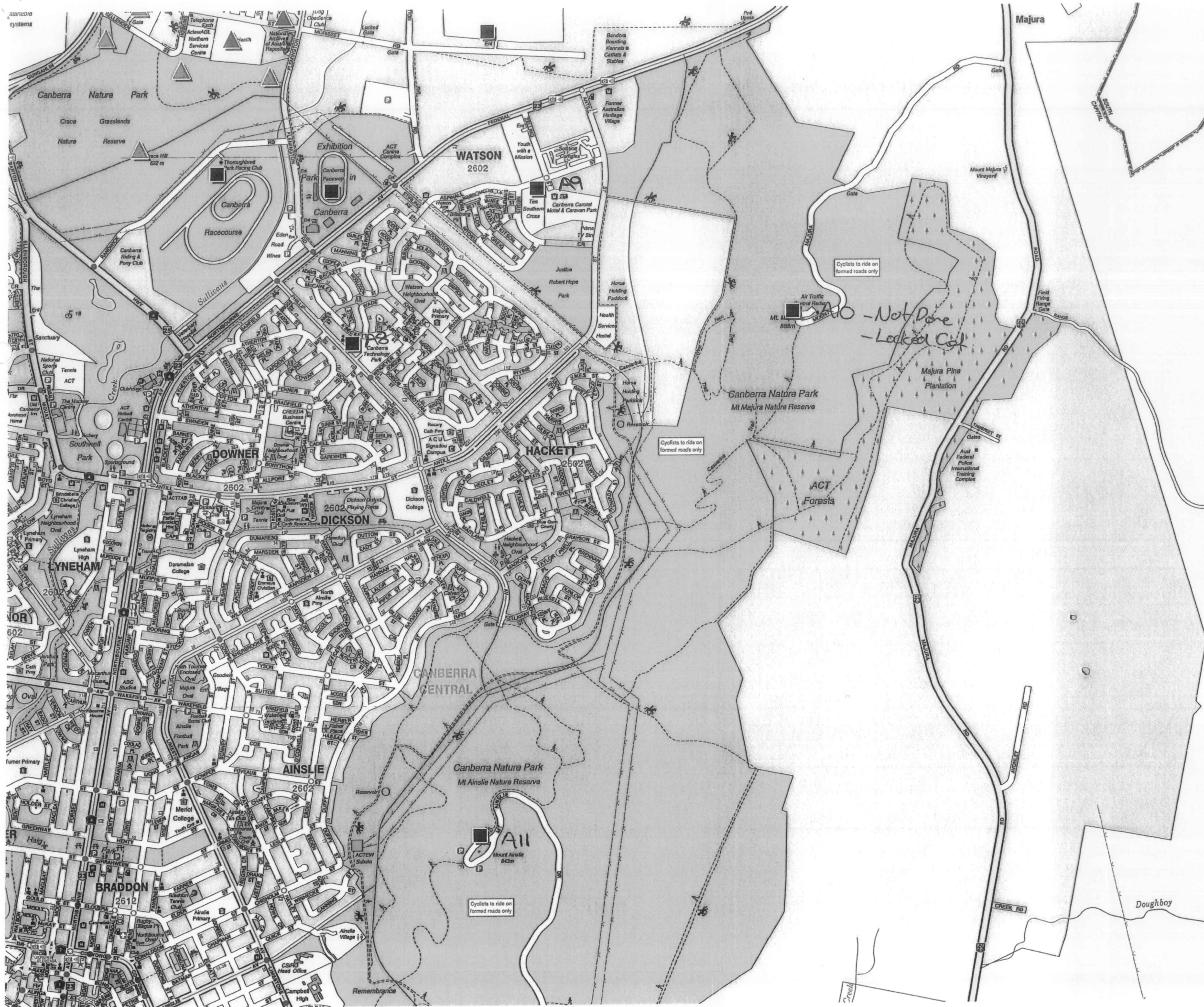
Projection MGA Zone 55 (GDA 94)
Center Coords 694 808, 6 100 991 m
Scale 1 : 8000 @ A3



Disclaimer

Data supplied by various stakeholders under Australia New Zealand Land Information Council (ANZLIC) Guidelines.
The information contained herein has been provided in good faith. Effort has been made to ensure its accuracy and completeness. The Stakeholders take no responsibility for errors or omission nor any loss or damage that may result from the use of this information.

ESAWIZ 1.10 30APR11
ACT Emergency Services Agency
Spatial Services Unit
© ACT Government 2010



EMERGENCY INCIDENT

TITLE
EPA Sampling Sites

DATE
17/09/2011 1251Hrs

NOTES

■ Swab Sites

m 50 100 150 200

PROGRAM VERSION
HAZMAT II1.2 02AUG2011



Data supplied by various stakeholders under ANZLIC* Guidelines





The information contained herein has been provided in good faith. Effort has been made to ensure its accuracy and completeness. The Stakeholders take no responsibility for errors or omission nor any loss or damage that may result from the use of this information.
*Australia New Zealand Land Information

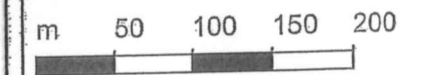
EMERGENCY INCIDENT

TITLE
EPA Sampling Sites

DATE
17/09/2011 1223Hrs

NOTES

-  Legal soil by 3
-  Swab
-  Soil
-  Swab Priority

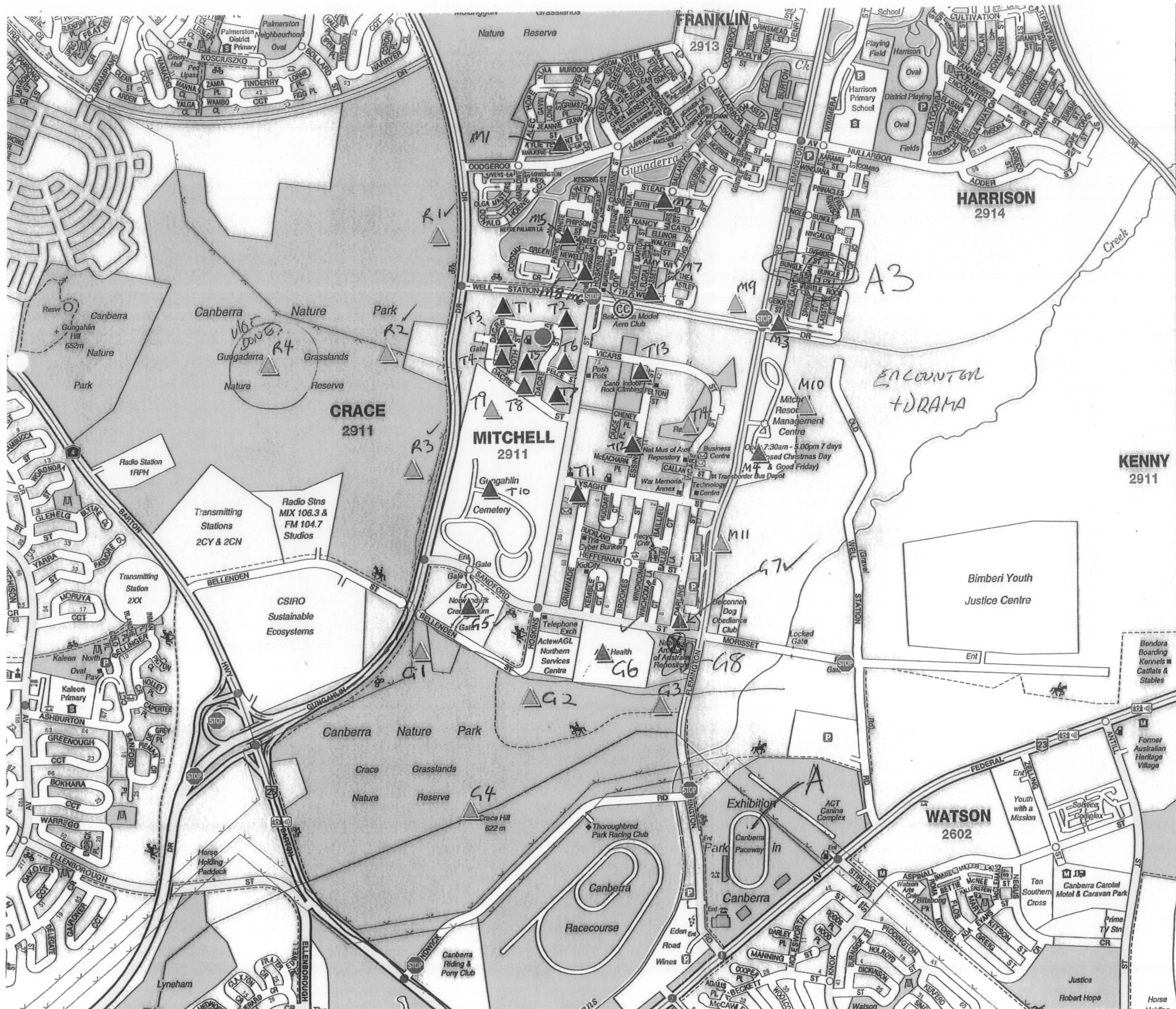


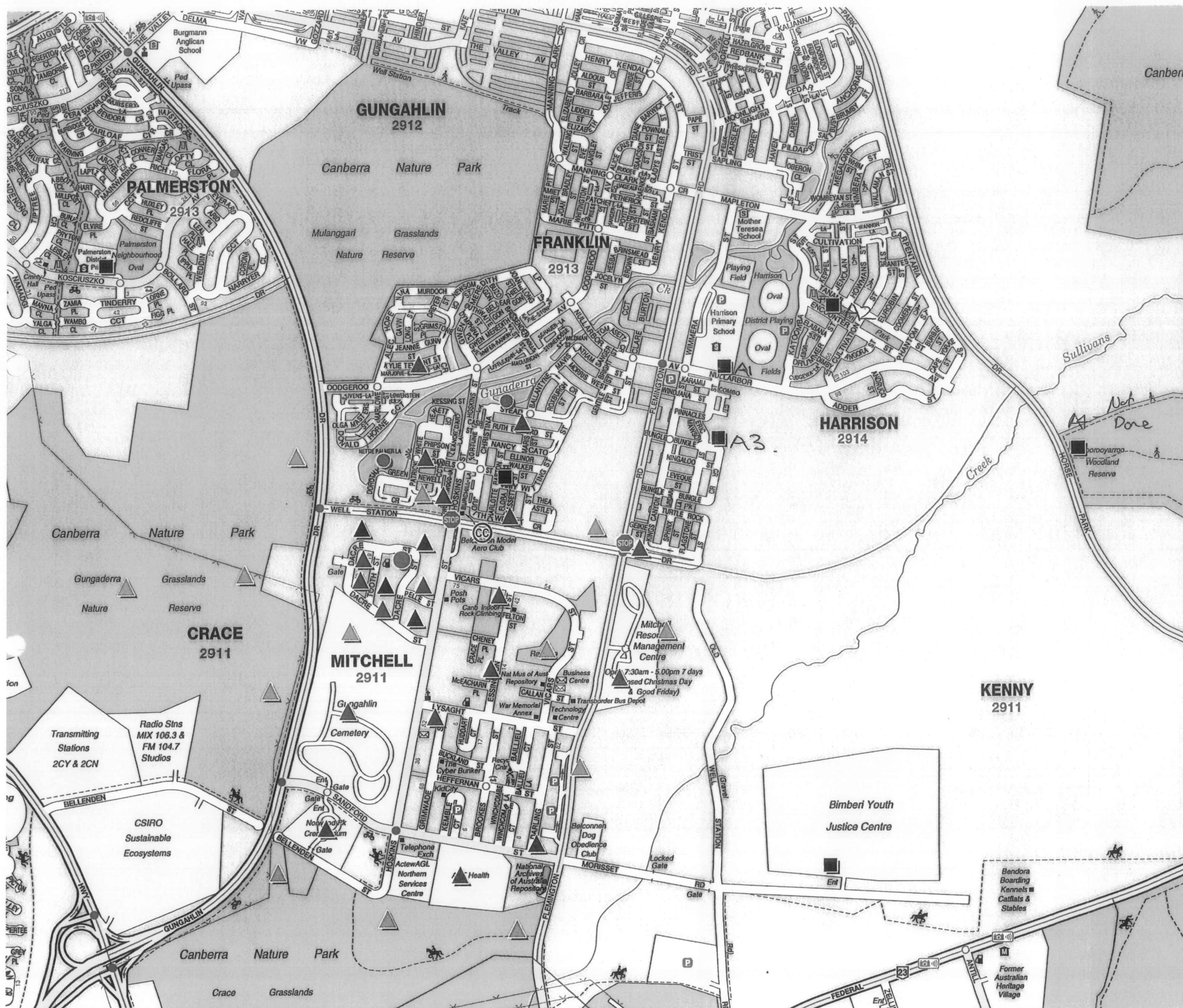
PROGRAM VERSION
HAZMAT II.1.2 02AUG2011



Data supplied by various stakeholders under ANZLIC* Guidelines

The information contained herein has been provided in good faith. Effort has been made to ensure its accuracy and completeness. The Stakeholders take no responsibility for errors or omission nor any loss or damage that may result from the use of this information.
*Australia New Zealand Land Information Council.





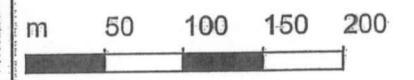
EMERGENCY INCIDENT

TITLE
EPA Sampling Sites

DATE
17/09/2011 1251Hrs

NOTES

■ Swab Sites



PROGRAM VERSION
HAZMAT III.2 02AUG2011



Data supplied by various stakeholders under ANZLIC* Guidelines

The information contained herein has been provided in good faith. Effort has been made to ensure its accuracy and completeness. The Stakeholders take no responsibility for errors or omission nor any loss or damage that may result from the use of this information.
*Australia New Zealand Land Information Council.

EMERGENCY INCIDENT

TITLE
EPA Sampling Sites

DATE
17/09/2011 1251Hrs

NOTES

■ Swab Sites



PROGRAM VERSION
HAZMAT II1.2 02AUG2011



Data supplied by various stakeholders under ANZLIC* Guidelines

The information contained herein has been provided in good faith. Effort has been made to ensure its accuracy and completeness. The Stakeholders take no responsibility for errors or omission nor any loss or damage that may result from the use of this information.

*Australia New Zealand Land Information Council.