

Emerson, Marc

From: Dolstra, Anita
Sent: Tuesday, 12 March 2013 4:16 PM
To: Emerson, Marc
Subject: MIN12/646 Canberra Christian School (2)
Attachments: Attachment 6 PPB assessment re CCS IPA.PDF; Attachment 5_ Appendix to CCS IPA application.PDF; Attachment 4 - Supporting Documents.PDF; Attachment 3 _ application from CCS IPA.PDF; Attachment 2 - Letter of approval.DOCX; Attachment 1 - Record of decision.DOCX

Follow Up Flag: Follow up
Flag Status: Flagged

-----< TRIM Record Information >-----

Record Number : DOC12/6148
Title : Attachment 6 PPB assessment re CCS IPA

-----< TRIM Record Information >-----

Record Number : DOC12/6147
Title : Attachment 5_ Appendix to CCS IPA application

-----< TRIM Record Information >-----

Record Number : DOC12/6146
Title : Attachment 4 - Supporting Documents

-----< TRIM Record Information >-----

Record Number : DOC12/6145
Title : Attachment 3 _ application from CCS IPA

-----< TRIM Record Information >-----

Record Number : DOC12/6144
Title : Attachment 2 - Letter of approval

-----< TRIM Record Information >-----

Record Number : DOC12/6143
Title : Attachment 1 - Record of decision

File Ref: 2011/01745

Ms Lynda Tooth
Manager
Liaison Unit
lynda.tooth@act.gov.au

Dear Ms Tooth,

Thank you for your request on 30 November 2011 seeking comments about the Seventh Day Adventist Schools (South New South Wales) Ltd application for in-principle approval of an additional campus of the Canberra Christian School (CCS) to be known as the Molonglo Campus in Wright, catering for early childhood to year 12.

To facilitate further consideration of the application by the ACT Minister for Education and Training, the Planning and Performance Branch (PPB) has assessed the application in terms of demographic and urban planning matters.

PPB confirms that population projections provided by the proprietor regarding growth in the Molonglo region are accurate. The projections support the need for schooling in Molonglo and demonstrate the demand for a non-government school in stage one from 2015. With 20% of all ACT students attending independent schools, there is demand for an independent school catering for students from early learning years to year 12 in the new district of Molonglo.

As community facility land across the ACT is now limited and the topography in Molonglo is challenging, suitable community facility sites must be allocated efficiently and users of the land must be prepared to incorporate principles of multi-storey development and co-location to improve the sharing of facilities. CCS has stated that they are willing to share sports facilities with other schools and the community.

PPB advises that the land allocated to CCS should be restricted to 3.0ha and the additional 3.0ha of community facility land used for another non-government school or suitable community purpose. Precedent for smaller school sites and shared community facilities is evidenced in planning for public schools with schools in Eastlake and Molonglo group centre likely to require sites of 2.0ha, with shared school and community facilities. The recently established Gungahlin College supports over 900 students and has college facilities occupying 3.0ha including outdoor recreation.

As there are currently no other schools in Molonglo, the proposal to establish a campus of CCS in Wright will not impact other schools in the area. With plans to develop a public (P-6) school in Coombs in 2015, residents of Molonglo stage 1 will have a choice of public and independent primary education.

There may be some interest in the school from families in nearby Weston Creek, however, as public schools in Weston Creek are experiencing enrolment pressure due to regeneration of the region and development in North Weston the establishment of the CCS Molonglo campus is unlikely to have a negative impact and is likely to relieve enrolment pressure. The proposal is unlikely to negatively impact other non-government schools in Weston Creek.

In summary, the assessment shows that:

- there is evidence of demand for the proposed additional campus of CCS in Molonglo stage 1
- the allocation of land to the school should be limited to 3.0ha, facilitating the establishment of an adjacent non-government school or community facility
- the proposal is unlikely to negatively impact local public and non-government schools
- the proposal is likely to relieve enrolment pressure in public schools in Weston Creek.

If you require more information on this matter, please email DETSchoolPlanning@act.gov.au or call Robyn Lewis on 6207 5377.

Yours sincerely



Tracy Stewart
Director
Planning and Performance Branch

2 June 2012



193

Joy Burch MLA

MINISTER FOR EDUCATION AND TRAINING
MINISTER FOR DISABILITY, CHILDREN AND YOUNG PEOPLE
MINISTER FOR THE ARTS
MINISTER FOR WOMEN
MINISTER FOR MULTICULTURAL AFFAIRS
MINISTER FOR GAMING AND RACING

MEMBER FOR BRINDABELLA

Ms Susan Johnson
Principal
Canberra Christian School
64 Ainsworth Street
MAWSON ACT 2607

Dear Ms Johnson

I refer to an application by the Seventh Day Adventist Schools Southern NSW Ltd seeking in-principle approval to apply for the registration of an additional campus of Canberra Christian School under section 83 of the *Education Act 2004*. This application was dated 14 February 2012.

I have decided to grant in-principle approval to apply for the registration of an additional campus of Canberra Christian School in the East Molonglo region.

I understand that the campus is to be named Canberra Christian School, Molonglo Campus, and that it will initially cater for students from kindergarten to year 6. I further understand that you propose to make further applications for in-principle approval so that the campus may grow progressively to year 12.

In granting the application I have considered the information provided in your application and the community comments provided in response to your proposal. I have considered the community demand for the campus and the likely impact of the campus on existing public and non-government schools.

I consider that the projected enrolments, population trends and written support from the community provide sufficient evidence of community demand for the campus. I consider that the campus will not negatively impact upon the viability of any existing public or non-government school.

I wish you all the very best in the planning for the new campus.

Yours sincerely

Joy Burch MLA
Minister for Education and Training

ACT LEGISLATIVE ASSEMBLY

London Circuit, Canberra ACT 2601 GPO Box 1020, Canberra ACT 2601

Phone (02) 6205 0020 Fax (02) 6205 0495 Email BURCH@act.gov.au Twitter: @JoyBurchMLA Facebook:
www.facebook.com/joyburchmla



ACT
Government

Education and Training

File Ref:

**PROPOSED REGISTRATION OF A NEW CAMPUS FOR AN EXISTING
NON-GOVERNMENT SCHOOL**

DECISION TO GRANT IN-PRINCIPLE APPROVAL

Proprietor: Seventh Day Adventist Schools Southern NSW Ltd

Proposal: A new campus for Canberra Christian School Mawson to be located in the East Molonglo region.

Proposed opening date: 30 January 2015

Year levels: Kindergarten to year 6

In accordance with Section 84 of the ACT *Education Act 2004*, I have granted in-principle approval for the development of a new campus for the aforementioned non-government school.

Ms Joy Burch MLA

Minister for Education and Training

//



Canberra
Christian School

CANBERRA

Application for In-Principle Approval
Additional campus: existing non-government school
Education & Training Directorate

APPLICATION SUMMARY ADDITIONAL CAMPUS FOR Canberra Christian School (Independent)

Andrew Barr MLA
The Minister
for Education and Training
ACT Education and Training Directorate
GPO Box 158
Canberra ACT 2601

APPLICANT

Sue Johnson, Principal
CANBERRA CHRISTIAN SCHOOL
64 Ainsworth Street
MAWSON ACT 2607

Mobile: [REDACTED]
Phone: 02 6286 3989
Email: Principal@ccs.act.edu.au

PROPOSED OPENING DAY

Primary K-4 : Oct, 2015
Middle 6-8 : Jan, 2017
High 9-10 : Jan, 2020
College 11-12 : Jan, 2022

enrolments/staging see pages 14-16

PROPRIETOR

Seventh-day Adventist Schools
(South New South Wales) Ltd
ABN: 33 110 697 375

PROPOSED CAMPUS LOCATION

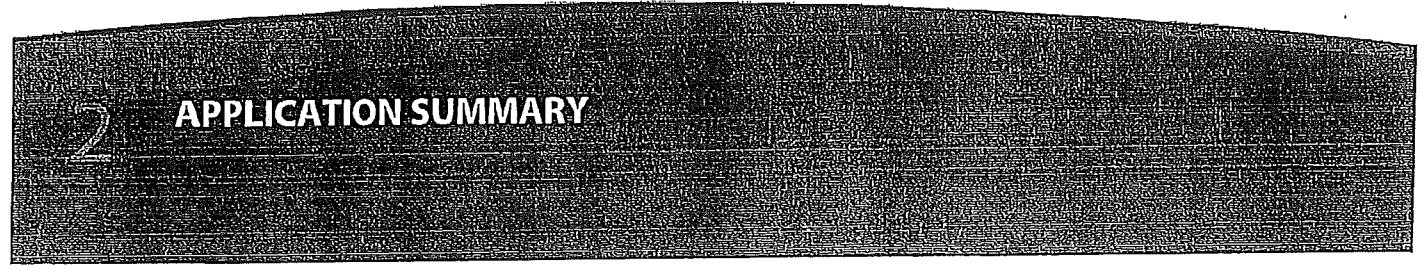
East Molonglo, Wright
Preferred location
Community Facility Zone, Precinct S

Projected 2028 Molonglo Campus Education Levels

Primary School Triple Stream 480 students	Middle School Triple Stream 270 students	High School Triple Stream 180 students	College Triple Stream 120 students
<input checked="" type="checkbox"/> Kindy	<input checked="" type="checkbox"/> Year 6	<input checked="" type="checkbox"/> Year 9	<input checked="" type="checkbox"/> Year 11
<input checked="" type="checkbox"/> Year 1	<input checked="" type="checkbox"/> Year 7	<input checked="" type="checkbox"/> Year 10	<input checked="" type="checkbox"/> Year 12
<input checked="" type="checkbox"/> Year 2	<input checked="" type="checkbox"/> Year 8		
<input checked="" type="checkbox"/> Year 3			
<input checked="" type="checkbox"/> Year 4			
<input checked="" type="checkbox"/> Year 5			

SCHOOL PRINCIPAL

DATE



INDEX

	APPLICATION SUMMARY	2
	SCOPE OF PROPOSAL	
1a	Services to students	4-6
1b	Services to community	7
1c	Proposed timeline	8
1d	Early Learning Centre on Molonglo Campus	9
1e	Governance / Structure for Molonglo Campus	10
	PARTNERSHIPS	
2a	Collaborations & contact details	11
2b	Summary of previous experience	12-14
	COMMUNITY DEMAND	
3a	SITE: Reason for site, location, size required	15-18
3b	Facilities, community, offsite	19
	COMMUNITY SUPPORT	
4a	Community interest & demand analysis	20
4b	Need for development of school	21-22
4c	Letters of support	23-25
4d	Prospective students—see 4b & 6c	21, 31
5a	CONSULTATION: Consultation to date	26-28
5b	Issues identified and addressed	29
	ENROLMENT PROJECTIONS	
6a	School aged children Molonglo District	21, 30
6b	Target enrolment by district & percentage	30
6c	Projected enrolments	31
6c	Peak capacity	32
6c	Long term capacity	33
	Notes	34

SERVICES TO STUDENTS

MOLONGLO CAMPUS

813

students
by 2028

	2028	2035	
	100	132	College (11-12) <i>double/triple stream</i>
	124	132	High (9-10) <i>triple stream</i>
	186	198	Middle (6-8) <i>triple stream</i>
	341	396	Primary (K-5) <i>triple stream</i>
	62	62	Early Learning Centre (3-4yo)

Gifted student program

A curriculum tailored for gifted students utilising GERRIC at UNSW for policies, implementation and staff development

Sports/Audio Community Stadium

A sports hall with tiered seats, with audio for dual use as hall/theatrical/media

Media, Music & Specialities

A two-campus school of 1,000 students is large enough to support specialist staff for extra-curricular and gifted student activities, including music and media.

Y11/12 College

Boutique environment designed to match the developmental needs of young adults within a faith-based community.

MAWSON CAMPUS

176

students

	2028	2035	
	132	132	Primary (K-5) <i>single stream</i>
	44	44	Early Learning Centre (3-4yo)

Gifted and talented students

At Canberra Christian School we already provide a **differentiated curriculum** to encourage all students, especially the gifted, to work at higher order thinking levels.

Our existing staff undertake professional development in this area. We are committed to enriching the curriculum to challenge students to achieve their best.

CURRICULUM ENHANCEMENT A two campus school will enable us to expand our work with gifted students through sharing specialised staff and content enrichment activities. Our operational budget for the two campuses includes a fee component to cover the costs to increase our commitment to gifted students.

GIFTED STUDENTS AND DEVELOPMENTAL STAGES Instead of accelerating gifted students to higher grades beyond their age-related maturity level, activities and projects of personal interest will be given to them to enrich their learning, while they maintain the social benefits from mixing with peers of similar age and maturity.

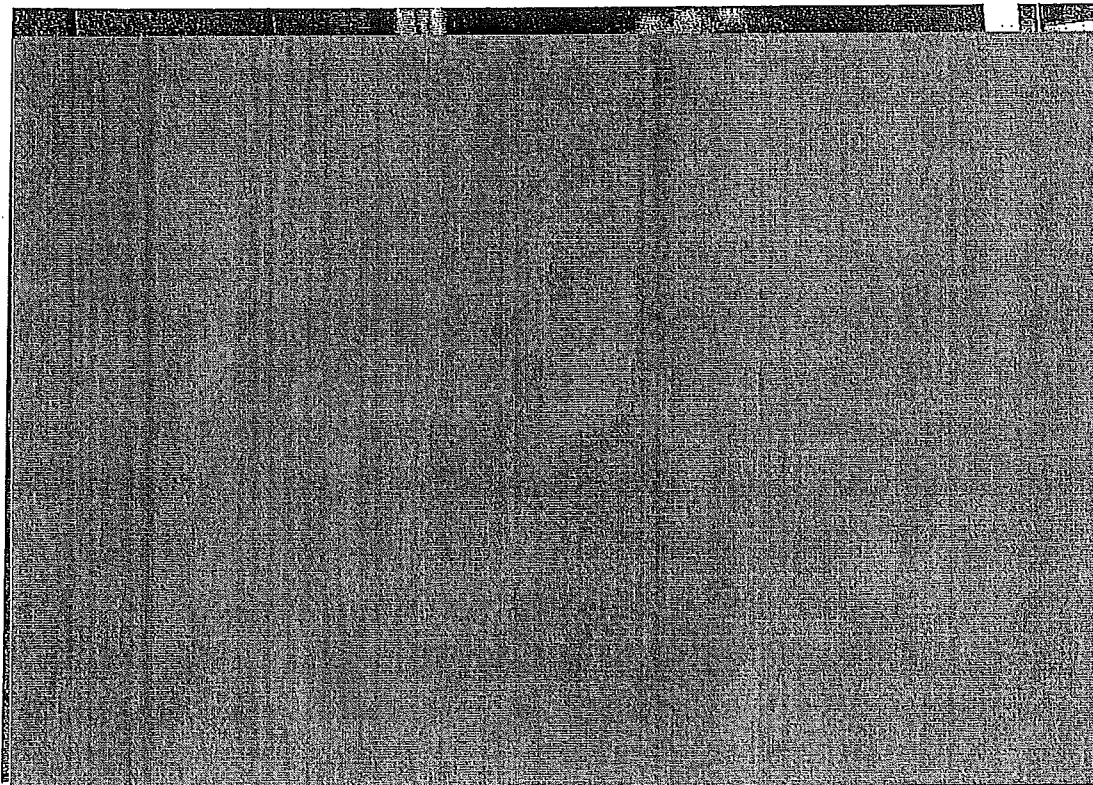
This is a 'whole school' commitment as equal opportunity must be provided to all.

GERRIC AT UNSW The Gifted Education Research, Resource and Information Centre (GERRIC) at the UNSW will be used for staff development and guidance with implementation and policy. GERRIC's will enable us to offer an effective gifted student program to the ACT based on the latest research.

SYSTEMIC ABILITY TO MAINTAIN PROGRAM

A differentiated curriculum is offered in Adventist schools across Australia. Our educational system of 48 schools has administrative support and resourcing to develop staff and programs to offer a differentiated curriculum for the benefit of all, and increase opportunities for gifted and talented.

By utilising GERRIC at UNSW, this is a strength we can offer to education in Canberra.



*“Teaching kids to count is fine,
but teaching them what counts is best”*

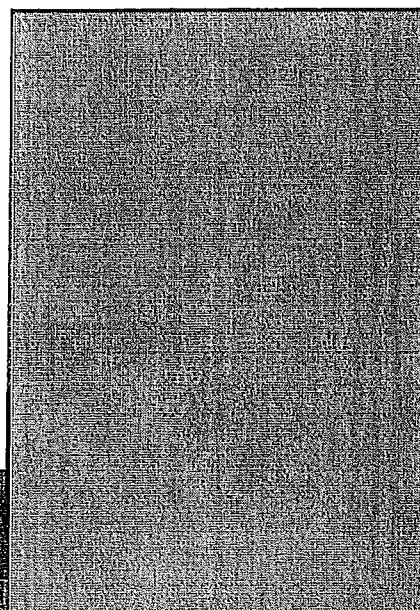
Bob Talbert

Our Vision

Nurture for today

Learning for tomorrow

Character for Eternity



SERVICES TO COMMUNITY

Sports and grounds

Canberra Christian School is willing to:

- Share sporting fields with another school
- Allow use of its sports and open-fields areas by the community
- Allow use of its outdoor hard-court sports facilities by the community

Architects Munns-Sly-Moore were engaged because of their Gungahlin College and Library consultancy, and have extensive experience in multi-use educational/ community facilities from a small to major scale. We have briefed them that our educational facility will also be a community facility, accessible to the community in non-school hours.

We are committed to the ACT original planning ideal that school open field areas serve as community space—and our architects will design to meet school security and outside school hours community purpose needs appropriately.

Multipurpose community centre

We have asked the architects to plan for a multi-purpose school and community centre—with the following criteria....

- School hall for assembly and indoor sports
- Designed with audio qualities to permit use as an audio-performance area
- With tiered seating around the courts area for use as a sports or performance hall, so families and interested can enjoy local sports competitions and school or community theatrical events etc...
- Weekend use as either a church or indoor sports area, leased out to recover costs of secure operation for community benefit.

PROPOSED TIMELINE

DEVELOPMENT TIMELINE

Ea Learn. Centre 3-4yo
 Primary School K-6
 Middle School 6-8
 High School 9-10
 College 11-12
 All Molonglo inc ELC

CAPITAL COSTS
 \$MIL BUILD
 CAPITAL INCOME
 \$MIL ACT SITE
 BGA Grant

2011 APPLICATION to register interest in MOLONGLO LANDS to Economic Development Directorate

2012 APPLICATION to Education and Training Directorate for IN PRINCIPLE APPROVAL

2013 APPLICATION considered by ETD and EED, community consultation, demand, impact on existing schools analysis etc.

2014 APPLICATION to ETD for In-principle Approval for Additional Educational Levels (High School)

2015 APPLICATION to ACT Community Services Directorate for Early Learning Centre In-Principle approval at Molonglo

2016 IF EDT approves: Planning, Funding, Development Application for construction

2017 APPLICATION to EDT for Registration of Additional Campus

2018 ELC - 3 Classes 1.89 1.20 Nil 2015 Number Classes

2019 Primary - 6 Classes 2.39 1.00 0.90 2016 Number Classes

2020 High - 3 Classes 1.89 2017 Number Classes

2021 High - 6 Classes 3.78 0.75 0.90 2018 Number Classes

2022 Primary - 6 Classes 2.39 1.00 0.90 2019 Number Classes

2023 High - 3 Classes 1.89 2020 Number Classes

2024 Primary - 6 Classes 2.39 1.00 0.90 2021 Number Classes

2025 High - 6 Classes 3.78 2022 Number Classes

2026 Middle School Y6 to Molonglo from Mawson in 2021

2027 Primary - 3 Classes 1.20 0.75 0.90 2023 Number Classes

2028 High - 3 Classes 1.89 2024 Number Classes

2029 TOTAL 21.60 4.70 4.35 2025 Number Classes

2030 STAGING AND COSTS FROM MUNNS-SLY-MOORE

2031 Building costs and stages supplied by the architect are preliminary

2032 until the masterplan and cashflow defines this better in 2012 after

2033 the decision by the ETD. Site costs estimated may include sewer,

2034 stormwater, electrical, substations, roads, parking, landscape,

2035 external works, subsoil condition (rocks etc), earthwork, BCA

2036 Grant estimate from ACT Independent Schis CapEx Budget.

2037 operations continue

2038 Long Term 2035 62 3 396 18 132 132 920

2039 2035 Classes 3 6 9 6 6 6 42

2040 2035 Classes 3 6 9 6 6 6 42

2041 2035 Classes 3 6 9 6 6 6 42

2042 2035 Classes 3 6 9 6 6 6 42

2043 2035 Classes 3 6 9 6 6 6 42

2044 2035 Classes 3 6 9 6 6 6 42

2045 2035 Classes 3 6 9 6 6 6 42

2046 2035 Classes 3 6 9 6 6 6 42

2047 2035 Classes 3 6 9 6 6 6 42

2048 2035 Classes 3 6 9 6 6 6 42

2049 2035 Classes 3 6 9 6 6 6 42

Early Learning Centre

Canberra Christian School will construct an Early Learning Centre (ELC) at Mawson campus in 2012, and then a 2-3 class centre at Molonglo Campus in 2015.

Improves primary school viability

MAWSON CAMPUS: A comparison between the 2008 Census and the Government site www.ifp.mychild.gov.au shows demand for long-day-care faith-based ELCs.

There are 33 English language ELCs within 5ks of Mawson offering 6,500 day-places each week (1300 available places each day for Pre-Kindy students). 97% of these weekly places are filled according to the census. Its analysis of faith also shows that less than half the demand for faith-based ELCs are being met within 5K of Mawson.

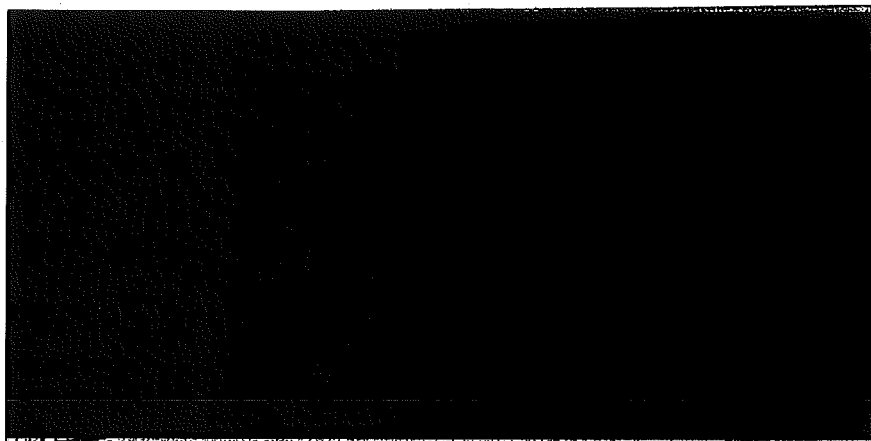
ACT experience is that a two classroom faith-based ELC for 3-4 year old children, if attached to a faith-based school, will fill the kindergarten class in the following year.

MOLONGLO: Molonglo will attract many families with children where both parents work. The demand for long day care ELCs will be high. In north ACT ELCs attached to schools filled to capacity rapidly. We would expect similar to occur at Molonglo.

Through attaching the ELC to the school we also obtain economies of scale and share infrastructure. Students from the ELC will stream to kindergarten and then later years, improving the viability and strength of the Molonglo school.

In 2016 there will be 620 three-four year old children living in Molonglo—a new area where it's likely both parents will work.

The Mawson ELC is to be constructed in 2012—and then we will build a second ELC at Molonglo in 2015 ready for use when the Molonglo school opens.



*Mawson Campus ELC to be built 2012
Munns-Sly-Moore Architects ©2011*

204

Governance and structure

The Canberra Christian School (CCS) is an operation of the proprietor: Seventh-day Adventist Schools (South New South Wales) Ltd, ABN 33 110 697 375.

CCS will be one entity with two campuses—one at Mawson and one at Molonglo.

GOVERNANCE: CCS will initially have a single school council which is responsible for both the existing Mawson and proposed Molonglo campuses. The school principal will administer both campuses on behalf of the council.

The School Council is in turn responsible to the Board of Directors. This is the proprietors board that administers the Seventh-day Adventist school system in South New South Wales (SNSW). There are three schools within the SNSW system: one at Albury, Narromine and Canberra (CCS).

This in turn is affiliated with the Seventh-day Adventist Schools Australia which cares for over 11,600 students.

RELATIONSHIP WITH EXISTING CAMPUS: The Mawson and Molonglo campuses will share administrative functions and operate academically as a single school with two campuses. As the schools grow—there will come a time when we have three campus heads (Primary Mawson, Primary Molonglo and High Molonglo) who are answerable to the principal and chief financial officer who will be responsible for the decisions and operations of both campuses of the Canberra Christian School.

ACCOUNTING AND REPORTING: Accounting, human resources (wages) and reporting functions are largely outsourced to the Seventh-day Adventist Schools system headquarters in Melbourne—which allows for lower administrative costs. This would continue.

205

Contact details



Susan Johnson
Dip Ed, B Ed
Principal
Canberra Christian School
64 Alnsworth Street
Mawson ACT 2607

Phone: 02 6286 3989
Mobile: [REDACTED]
Fax: 02 6286 6081

Principal@ccs.act.edu.au

www.ccs.edu.act.au



James Toogood
B Com, GDip Theo
Board, Pastor
Canberra Christian School
64 Alnsworth Street
Mawson ACT 2607
Phone: [REDACTED]
Fax: 02 6286 6081
JamesToogood@Adventist.org.au



Dr Jean Carter
Ed D, MA, B Ed, Dip Teach,
MACE, Dip Acc, JP
Executive Director
Adventist Schools NSW/ACT
4 Cambridge Street
Epping NSW 2121
Phone: 02 8876 5256
Mob: [REDACTED]
JeanCarter@Adventist.org.au

Dr Daryl Murdoch Dip Ed, B Ed, M Ed, PhD

Director
Adventist Schools Australia
48 Schools, 11,600 students
PO Box 4368, Ringwood VIC 3134
Phone: 03 9871 7518 Fax: 03 9870 7715
Email DarylMurdoch@Adventist.org.au

Robert Sly FRAIA, Director Erik Innes RAIA, Assoc. Director



MUNNS SLY MOORE ARCHITECTS PTY LTD ABN 20 058 534 049
9 Hall Street PO Box 5093 Lyneham ACT 2602 Australia
P +61 2 6248 8722 F +61 2 6248 8300

Nominated Architect 92/931 S. Park ACT 2602 0672 www.munnslymoore.com.au

Adventist Schools in NSW/ACT

"The Seventh-day Adventist educational system is one of the largest independent Christian school systems in the world. It has a total of 7,598 educational institutions operating in over 100 countries around the world with over 1.5 million students.

The system encompasses Early Childhood, Primary, Secondary, College, University and Medical Training institutions.

The denominationally-based school system began in the 1870s with a basic philosophy outlined by EG White, "Mental, physical, social, and spiritual health, intellectual growth, and service to humanity form a core of values that are essential aspects of the Adventist education philosophy."

There are 11,600 students enrolled in 48 K-12 Adventist schools in Australia.

In NSW and ACT there are three different regional areas of the Seventh-day Adventist Church: In these there are 20 schools with 23 campuses. They employ 403 teachers in three companies with a total of 5,836 students enrolled in the NSW & ACT schools."

Dr Jean Carter, State Director
Original document: Appendix A—2

Canberra Christian School, operated through the Seventh-day Adventist Education System, is located in Ainsworth St, Mawson and caters for Pre-Kindy students (4 year olds) to Year 6. I have been the Principal at the school for the past two years. During

this time the school has had a stable enrolment in Pre-Kindy with 14 students in 2009 and again in 2011. In 2009 there were 25 students in Years K-6 which has grown to 39 this year. Growth is expected to continue next year.

Susan Johnson, Principal
Canberra Christian School

100 Years of Adventist Schools in Australia



Adventist Schools Australia (ASA) is a national system operating 48 schools and educating over 11,600 students.

Seventh-day Adventist education has been operating in Australia for over a century and has added to the fabric of education in a range of communities across all states and territories over this time.

ASA schools offer quality educational opportunities within the low to medium school fee range.

The median SES for ASA schools is 96 with a range from 85 to 122.

We believe that our school system will provide families locating in the Molonglo Valley with quality, affordable, values-based independent education that will add to the fabric of educational provision that you envisage for the community choosing to locate in this developing area of the Australian Capital Territory.

Dr Daryl Murdoch PO Box 4368, Ringwood VIC 3134
Director of Adventist Schools Australia Phone: 03 9871 7518 Fax: 03 9870 7715
Email DarylMurdoch@Adventist.org.au

Original document: Appendix A—1

Munns-Sly-Moore Architects

Munns-Sly-Moore Architects is an award winning architectural design practice based in Canberra. They have proven expertise in public and educational building design for over 35 years in the ACT. They recently completed a \$72mil project with the Department of Education and Training and ACT libraries: the Gunghalin College and the College/Community Library.

MUNNS SLY MOORE architects

Canberra Christian School – Molonglo Campus

PRELIMINARY COSTINGS – Revised 23 November 2011 – For increased enrolment projections

These preliminary costs are based on enrolment numbers provided by the client. The costs allow for building works, professional fees and furniture. As the site is unknown, costs for site works, site services, roads, parking areas, landscaping and playing fields are also unknown. A notional site cost has been included in these estimates, however accurate costs can only be provided when the site is known.

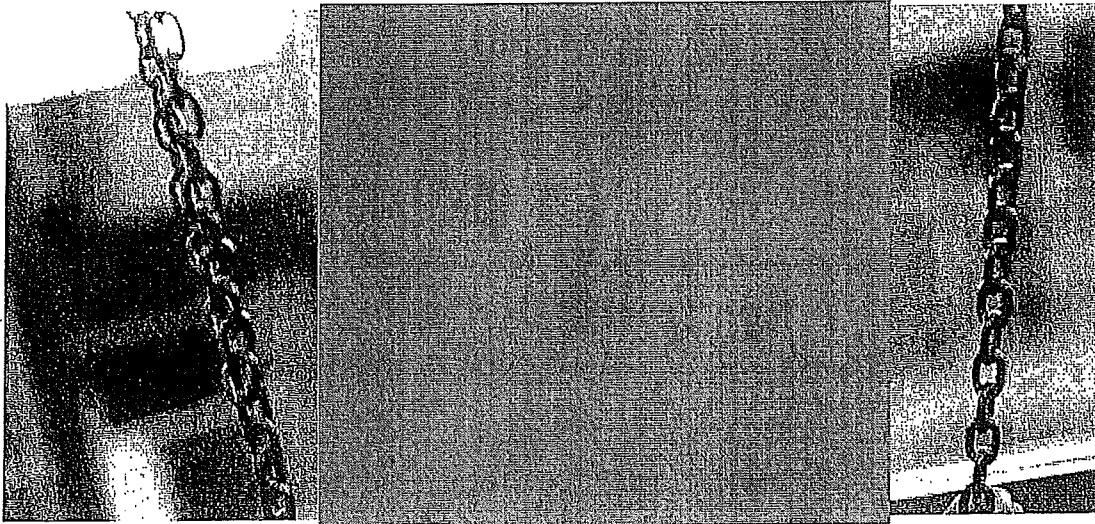
Staging dates are assumed and based upon enrolment projections.

STAGE	YEAR OF CONSTRUCTION	DESCRIPTION	\$M Building	\$M Site	\$M TOTAL
1	2015	ELC – 3 Classes Primary – 6 Classes	[REDACTED]	[REDACTED]	[REDACTED]
2	2017	Primary – 6 Classes High – 3 Classes			
3	2019	High – 6 Classes			
4	2021	Primary – 6 Classes High – 6 Classes			
5	2024	Primary – 3 Classes High – 3 Classes			

Note: These costs are for 2011 prices and do not allow for escalation.

ACT ARCHITECTS ASSOCIATION
MEMBER SINCE 1998
100/100 ACT ARCHITECTS ASSOCIATION
100/100 ACT ARCHITECTS ASSOCIATION

They were chosen for their proven expertise in consulting, designing, and managing long term major scale developments that serve the dual purpose of education and community through shared facility use, like at Gunghalin College & Library.



Reasons for seeking additional site

Expansion at Mawson Primary

Canberra Christian School have engaged Munns-Sly-Moore architects to plan an Early Learning Centre (ELC) at the site adjacent to our Mawson school. It will have a Long Day Care license for 3-4 year old children. It will provide 44 student places in two classrooms. We will relocate our pre-kindy class to the ELC, which will free up an existing classroom to allow for primary expansion. We receive quite a number of enquiries for before and after school care. Currently we cannot cater for this but plan to with the ELC. This facility will also stream students to our Mawson K-6 primary which will grow to a full K-5 single stream primary school.

Mawson Land not large enough

Parents ideally require a faith based school to provide for both primary and high school needs. Our Mawson land (0.9 ha) is not large enough to build a viable high school or a large enough primary to support it.

We purchased an additional site (0.2 ha) attached to the existing, and will build an ELC on this. There are no major lands available in Mawson for a high school.

WHY A CAMPUS AT MOLONGLO?

This application is specifically for land at Molonglo for two critical reasons.

1. It is the only community use land available close enough to our existing Mawson campus in Woden to be a viable second campus.
2. Major arterial roads (Tuggeranong and Hindmarsh Drives) provide crucial access to our faith community who are spread across all Canberra suburbs.



A viable second campus is possible at Molonglo

We can only operate a multi-stream ELC & Primary that feeds into a viable multi-stream high school if:

- The high school is located at one of the campuses, to allow for economic building and operation from shared administration and infrastructure.
- The high school is within accessible distance from the other primary campus so that students from both primaries are able to stream into the high school.
- Reasonable proximity of campuses allows for sharing of administration and specialised teachers. This enables us to offer programs for gifted students, music, media, sports and chaplaincy with equal access to both campuses.

Accessible to our faith community

Molonglo is the only community land release that is accessible to all members of our faith community—who are spread throughout Canberra. We anticipate 15% of enrolments will come from our faith. Their parents provide fund-raising and core support beyond their proportional enrolments. A location far north or far south would cut off significant support and use of the school for many people.

CATCHMENT AREA & LOCATION

MOLONGLO STAGE 1

The community facility zone (CFZ), Precinct S, is central to the Molonglo development.

This will become home to over 55,000 people – with 15,500 school children needing education by 2035 according to projections by the EDD and ACT Government.

20% of these (approx. 3,000) will want to be educated in independent schools, based on the current statistics.



212

MUNNS SLY MOORE architects

Canberra Christian School – Molonglo Campus

REQUIRED AREA FOR SCHOOLS – Revised 23 November 2011 for increased enrolment projections

As a common campus for the 3 different facilities at Molonglo, the Early Learning Centre, the Primary and the High School will achieve economies of area where some areas can be shared.

Parking areas, the service areas and the playgrounds could be shared by each school and even facilities such as Library, Canteen and Hall also could be shared.

Accordingly the areas for each individual facility as recommended by the Commonwealth Guidelines, would not necessarily be the Total site area that we would require.

SITE AREA REQUIREMENT BY ENROLMENTS

1. ELC 3 Streams	-62 Students	-area 2000 sq.m or 0.2 Ha (Mawson site for ELC 1680sq.m)
2. PRIMARY 3 Streams	-462 Students	-area 2.9 Ha
3. HIGH SCHOOL 3 Streams	-396 Students	-area 5.6 Ha
TOTAL		8.7 Ha

OPTION

4. COMBINED CAMPUS	-924 Students	-area 7.7 Ha
--------------------	---------------	--------------

We recommend a site area for those facilities to be between 5.6 Ha and 7.7 Ha.



MUNNS SLY MOORE ARCHITECTS PTY LTD
9 Hall Street PO Box 5090 Lyncham ACT 2602 Australia
P +61 2 6248 9922 F +61 2 6248 6380

Registered Architects ACT Reg No. 10710

www.munnslymoore.com.au

Registered Architects ACT Reg No. 10710

www.munnslymoore.com.au

18

3A SITE SIZE OF THE PROPOSED SITE

FACILITIES SITE 3B

PLANNED FACILITIES

All facilities are planned in consultation with Munns-Sly-Moore Architects. Formal Master Plans will be drawn late 2012 should DET grant in-principle approval.

The intention at the new campus is for facilities to provide for the:

EARLY LEARNING CENTRE

A three-class 66 place ELC at the campus site.

PRIMARY CAMPUS

An initial single stream K-5 will grow to triple stream to be housed in eighteen classrooms, a library, administration or hall that will convert to classrooms at later stages.

MIDDLE SCHOOL CAMPUS

A triple stream 6-8 will be housed in twelve classrooms, a library, administration or hall as decided in the Master Plan. Year 5 from Mawson Campus will cross to Year 6 at Molonglo to support the triple stream Middle-Upper school. Four primary streams in two campuses only require 75% students from both campus primaries to fill our triple-stream middle school, which adds to the strength and viability of the upper schools.

HIGH SCHOOL CAMPUS

A triple stream 9-10 will be housed in six classrooms, a library, administration or hall as decided in the Master Plan.

MULTIPURPOSE COMMUNITY & SCHOOL HALL

We will build a multipurpose sports/assembly/theatre venue useful to the school and community that is utilised seven days and nights per week.

COLLEGE FOR 11-12

The final stage is to add facilities to complete the College so the school offers ELC, K-12.

This major, multi-year staged plan has been successfully followed by other schools in the NSW Adventist system and ACT Independent Schools.

Community interest & demand

Sources of students at Molonglo

Students at the Canberra Christian School at Molonglo will come —

Principally from Molonglo, some from the wider community

Streamed into the Kindergarten then Primary from the Early Learning Centre

Streamed into Middle and High School from Mawson & Molonglo Primaries

Community interest for an independent Christian school

We are an independent Christian school at Mawson, 1km from Woden Commercial & Hospital centres. A second K-12 campus at Molonglo would draw some city-wide students, but mainly serve the new Molonglo development in three principle areas:

- Those desiring independent Christian schooling for their children
- Parents of gifted and special needs children. Budgeted fees include an annual component to fund a gifted & media-performance program. Specialist teachers (music, gifted, media) and facilities will be shared between the two campuses.
- Parents who wish their children to receive training in media and performing arts from ELC, K—12.

Facilities are important

Dr Daryl Murdoch, the director of Adventist Schools Australia, reported that recent in-house systemic research shows parents send their children to Adventist school systems primarily because of the facilities available more than for Christian faith preferences. Some of our schools have over 80% of enrolments coming from outside the denomination.

Molonglo Land for a ELC, Primary and Double Stream High

Land in Molonglo would mean our long term plan of building a viable secondary school for our students could be realised. We will start with a 3 class ELC & 6 class primary. With additional stages this will become a separate ELC and K-6 primary school. Molonglo Campus and Mawson Campus would both stream their primary school students to the middle, high and Y11-12 college to be built at Molonglo. This would be a triple stream secondary campus to Year 12. Students from both primary school campuses may complete their education on this site.

Where would students come from

Existing Mawson site: 60% of current primary and 7% of Pre-Kindy students come from our three church communities from all areas in Canberra and Queanbeyan. Those from other faith and secular communities also come from various areas in ACT. Land in the Molonglo area is central to our catchment areas for students of our faith.

Molonglo site: Other schools in our system receive over 80% of enrolments from other faith or secular communities. Our special character appeals to parents wanting faith based grammar education for an accessible fee. Our system fees are within the low to medium school fee range.

We would expect a triple stream Early Learning Centre, Primary and High would have 10% of students from our faith communities. The other 85% would come from those wishing to access reasonably priced independent schooling—principally from the new land area, and some from all areas of the ACT.

Can we sustain and staff a double stream k–12 system?

Although in the ACT our historical presence has been smaller, our education systems in Sydney, NSW and Australia are significant. With 48 schools, we have the systemic ability to successfully engage in medium scale educational infrastructure.

SITE INFORMATION

Impact on other Christian Schools

The inclusion of an affordable fee, Christian school from outside the Catholic tradition is an essential ingredient of the successful planning for the Molonglo Valley Development. These types of schools have been the fastest growing form of schools across all sectors over the last two decades.



Parent demand for these types of schools has been consistent across a range of socio-economic segments and will undoubtedly be reflected in the households established in the Molonglo Valley Development.

Similar existing schools in other areas of Canberra are experiencing capacity constraints and would welcome the establishment of a new Christian school in the Molonglo Valley Development.'

Mark Spencer BBus, M. Lab, Rel & Law, FICA, JP
Executive Officer and National Policy for Christian Schools Association
Original document: Appendix A—7

Our commitment is to provide services for children of all backgrounds without favour in the Molonglo and western ACT

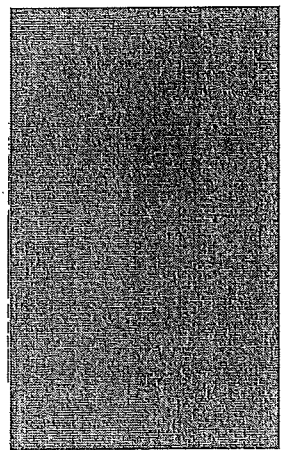
From the Adventist Education System

Currently there is only one Seventh-day Adventist primary school in the ACT, however we strongly believe that Early Learning Centre to year 12 campuses are the way of the future. We would prefer to find a campus where we could start an ELC and grow the school to Year 12.

Dr Jean Carter
State Director, Adventist Schools Australia
Original document: Appendix A—2

From parents at our Mawson Campus

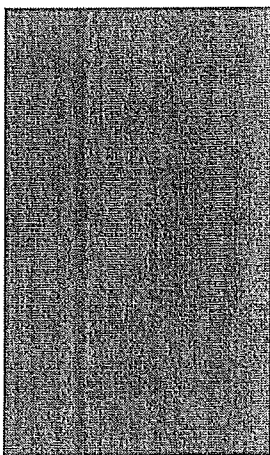
The community in Weston Creek and greater Canberra region would benefit significantly if Canberra Christian School was successful in its attempts to secure land in the Mount Stromlo / Molonglo new development.



[Redacted] commenced Kindergarten this year and it has been our experience that the school provides quality education in a nurturing environment.

This type of education along with the strong moral values instilled by the school and at home will ensure her future is successful, and [Redacted] be exposed to greater potential opportunities and experiences. [Redacted] looks forward to school each and every day, she is genuinely excited to attend school, and she takes pride in belonging within such a strong and caring social network.

Original document: Appendix A—3



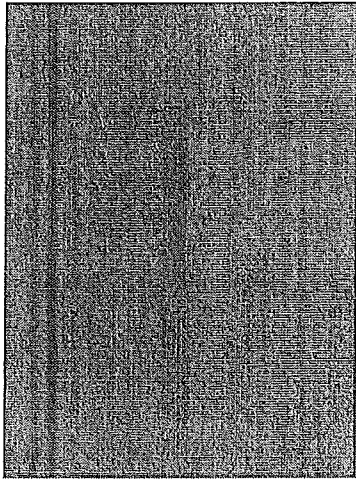
Our experience of Canberra Christian School has been very positive. Just starting out on the school path with our oldest starting Kindergarten we weren't sure where to look. When we came across the website that was the first positive step. The school has a strong sense of community and have been very accommodating to [Redacted]

[Redacted] We often talk of how it feels when we walk into the playground and there is a sense of care amongst the children for each other. We feel a good deal of this comes down to the staff and how they teach and model this to the students. [Redacted] talks a lot about things [Redacted] learning and a desire to keep learning is fostered.

We have recommended the school a few times when people have mentioned that they are looking at school options. It would be lovely to see the school extended to include an option for a high school.

Original document: Appendix A—4

Graduate and grandparent



The Adventist Christian primary school was great. If I had the opportunity I would have gone to their high school if it was offered. I lived in [redacted] so Molonglo would have been even closer than [redacted] If the Christian School High was in Gungahlin or North Canberra it would likely have been too far away by bus.

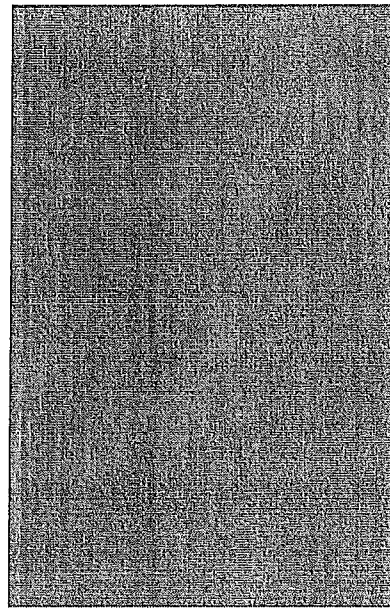


Original document: Appendix A—5

In 1981 I enrolled [redacted] after considering all options. Their philosophy, as well as their approach to teaching, curriculum, standard of education and values guided my decision. At no time was I disappointed...

I have referred other parents and have been delighted with the generous praise they have given the school. It's with great pride I now see [redacted] choosing to send their own children to the school.

I strongly believe the continued operation and growth of the school is a definite benefit to the community and education facilities in the ACT.



Original document: Appendix A—6

CONSULTATION

The school proprietors have funded an additional day of principal relief each week for 2011 and 2012 to allow for consultation and reporting associated with school campus extension and growth planning. In 2011 they engaged a pastor on a 5 year contract to Mawson Campus Church who is also an accountant. James Toogood has major Sydney development project application and funds management experience.

External Consultation

PAID PROFESSIONAL

The proprietors have engaged Munns-Sly-Moore Architects to consult about applications and the master planning process.

ACT PEER PROFESSIONAL

The principal, CFO and ELC manager of Brindabella Christian College in Lyneham have given extensive support in 2011—including historical financials & management advice based on their experience to aid our budgeting and staff planning for the growth of our Campus at Mawson and Molonglo. The principal of Trinity College has also given advice.

ADVENTIST SYSTEM SCHOOLS

Three Adventist schools (700 to 1000 K-12 students) have given historical financials, management or ten year strategic plans. Central Coast in particular grew from 150 students to 980 in a staged, ten year process similar to what we are planning.

STAKEHOLDERS

Proprietors, Company Directors, Adventist System Executives and all relevant boards have been advised of plans and are supportive of them—as evidenced by their statements in this document, the funds to date for professional advice, principal's relief and assigning a pastor with project experience to the ACT for a minimum 5 years.

PROFESSIONAL BODIES

Andrew Wrigley of the Association of Independent Schools, Mark Spencer from the Christian Schools Association, officers of ACTPLA and the EDD in ACT have all given advice and been consulted with.

2012 CONSULTS & APPLICATIONS

There are two critical applications and one professional consult that will be made next year after further advice on timing and forms to the ACT government:

In-Principle Approval for Additional Educational Levels

We will make the necessary application for the High School Levels that this application is proposing later in 2012 after the ETD has considered this application.

In-Principle Approval for a Non-government Early Learning Centre

We will consult with the Community Services Directorate to make the necessary application for the Early Learning Centre at Molonglo.

Education Master Plan After ETD decision on this application we will consult formally with the Central Coast Adventist School, ACT Brindabella College, UNSW GERRIC and the Adventist Schools system to develop an educational strategic plan for the goals for the ensuing years to ensure this proposal succeeds.

Finance Plan We have received great help from various 600-1100 student independent schools, including ACT, who have supplied their financials and bank applications to expedite and give support to the finance process which will commence late 2012 and through 2013.

Architectural Master Plan Once the ETD gives guidance on the status of this application we will immediately consult with Munns-Sly-Moore to develop a master plan for the likely site so there is good time to review with the EDD, ETD and stakeholders.

Other Future Consultation

This application represents an ongoing process, so that all the parties consulted with to date will continue to be consulted in 2012 and beyond.

