

## **FREEDOM OF INFORMATION REQUEST – AURORA KINGSTON**

### **Responses to applicant questions**

- a) the internal dimensions for Units B3:38 and B2:24 from the DA plans submitted for block 2 Section 51 Kingston DA 201018066 (decision made 23/10/2010) for the Aurora Apartments -

Plans for Levels 2 & 3 approved pursuant to the decision dated 23/10/10 are referenced as S144B in the document title and are attached. These plans do not have dimensions, but have a scale in the title bar. I have checked all other documents submitted with the DA, but could not find internal dimensions of any units. However, from the colour code on these drawings, it appears that Units B3:38 and B2:24 were approved as 1 bedroom units. Our inference from this is that the room with the sliding door accessed directly off the living area is a study.

I have also attached copies of approved floor plans for Levels 2 & 3 for a subsequent amended application DA20108066E. These plans are identified with S197E in the document title. I confirm that no amendments were requested in relation to Units B3:38 and B2:24 as part of DA20108066E. However, these plans clearly state the scale as 1:200 and also indicate external dimensions. This will assist in checking the area of the units in question which are definitely a minimum of 50sqm as required by Rule 204 for “1 bedroom” units;

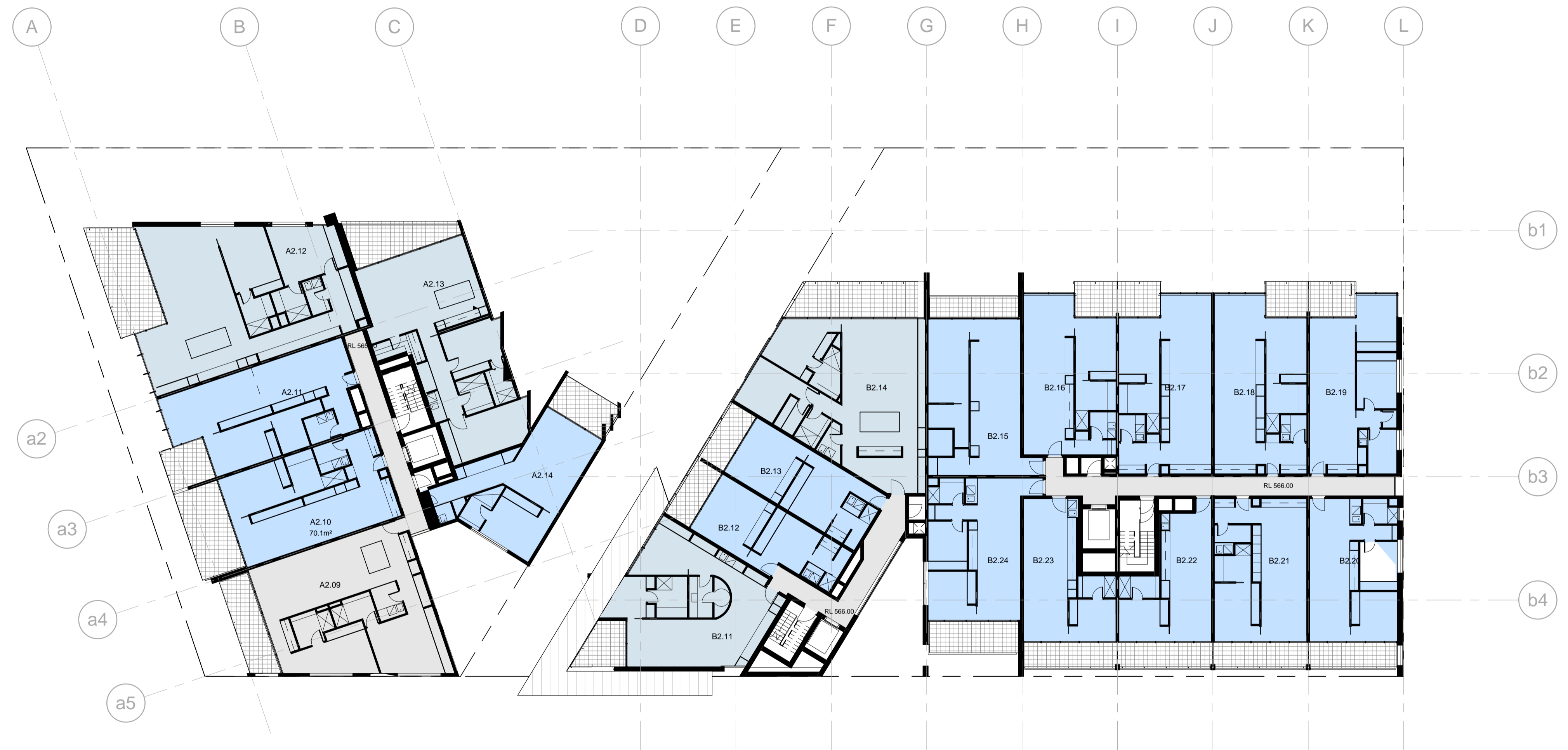
- b) the specific detail of any associated request by the developer (Englobo) to reduce the size of these two units outside the specification of R204 –

No such request was made by the developer

- c) A simple reference or statutory instrument that would have been used to approve any variation by ACTPLA to reduce the size of these units outside R204 parameters and the rationale/decision behind an approval noting C204 (as referenced below) –

Not relevant, since no request was made to reduce the size of these units.

ALL LIFTS TO BE AS 1735.12 COMPLIANT.  
ALL ADAPTABLE APARTMENTS TO COMPLY WITH AS 4229-1995 7 THE ACCESS & MOBILITY CODE.



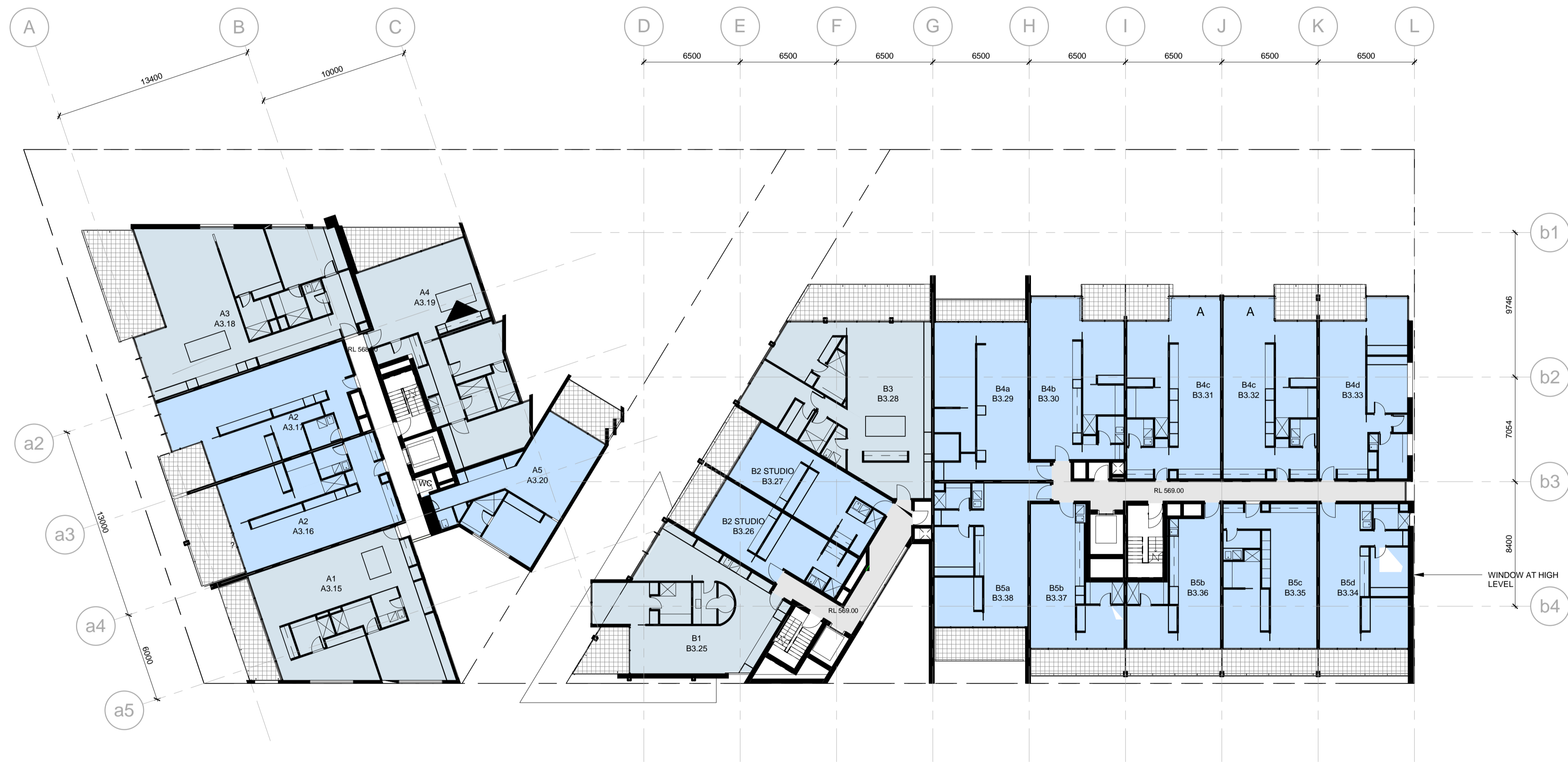
PLANNING AND DEVELOPMENT ACT 2007  
**APPROVAL GRANTED**  
 SUBJECT TO THE CONDITIONS SET OUT IN THE  
 NOTICE OF DECISION  
 PURSUANT TO SECTION 162

Delegate name: SIMON HAWKE  
 Date: 7/12/2010

- COMMERCIAL
- 1 BED
- 2 BED
- 3 BED

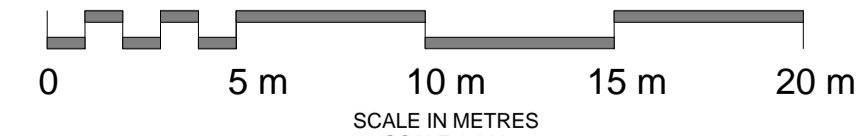
ALL LIFTS TO BE AS 1735.12 COMPLIANT.

ALL ADAPTABLE APARTMENTS TO COMPLY WITH AS 4229-1995 7 THE ACCESS & MOBILITY CODE.

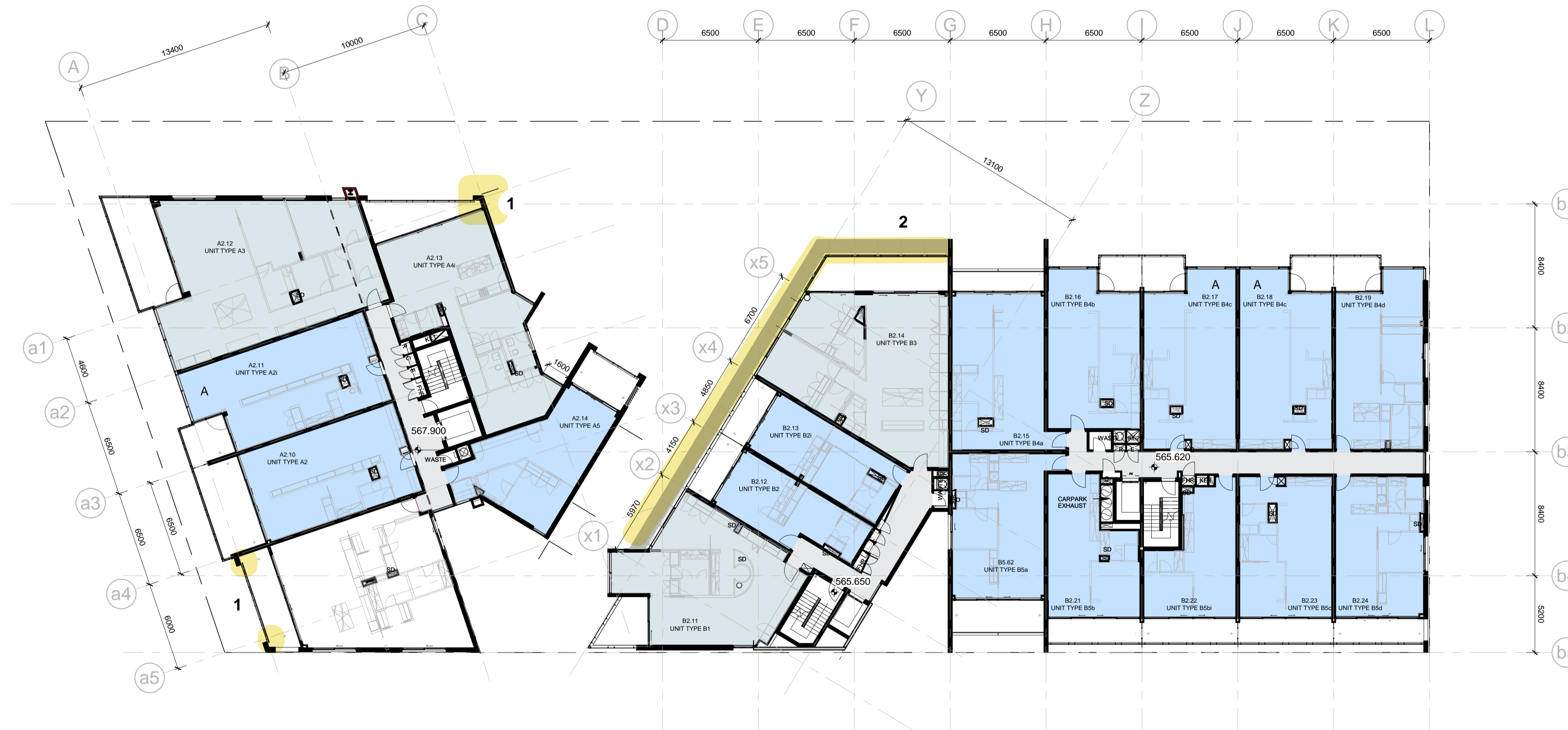


- COMMERCIAL
- 1 BED
- 2 BED
- 3 BED

PLANNING AND DEVELOPMENT ACT 2007  
**APPROVAL GRANTED**  
 SUBJECT TO THE CONDITIONS SET OUT IN THE  
 NOTICE OF DECISION  
 PURSUANT TO SECTION 162  
 Delegate name SIMON HAWKE  
 Date 7/12/2010



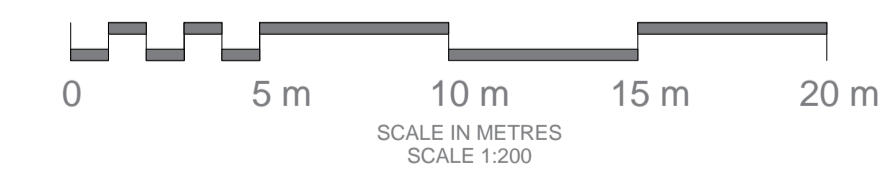
PLANNING AND DEVELOPMENT ACT 2007  
**APPROVAL AMENDED**  
 PURSUANT TO SECTION 198  
 IN RESPECT OF THE NOMINATED  
 AMENDMENTS ONLY  
 Delegate name MEENA RAMESH  
 Date 2/7/2012



1. FACADE ADJUSTMENT
2. SUNSHADE ADDED

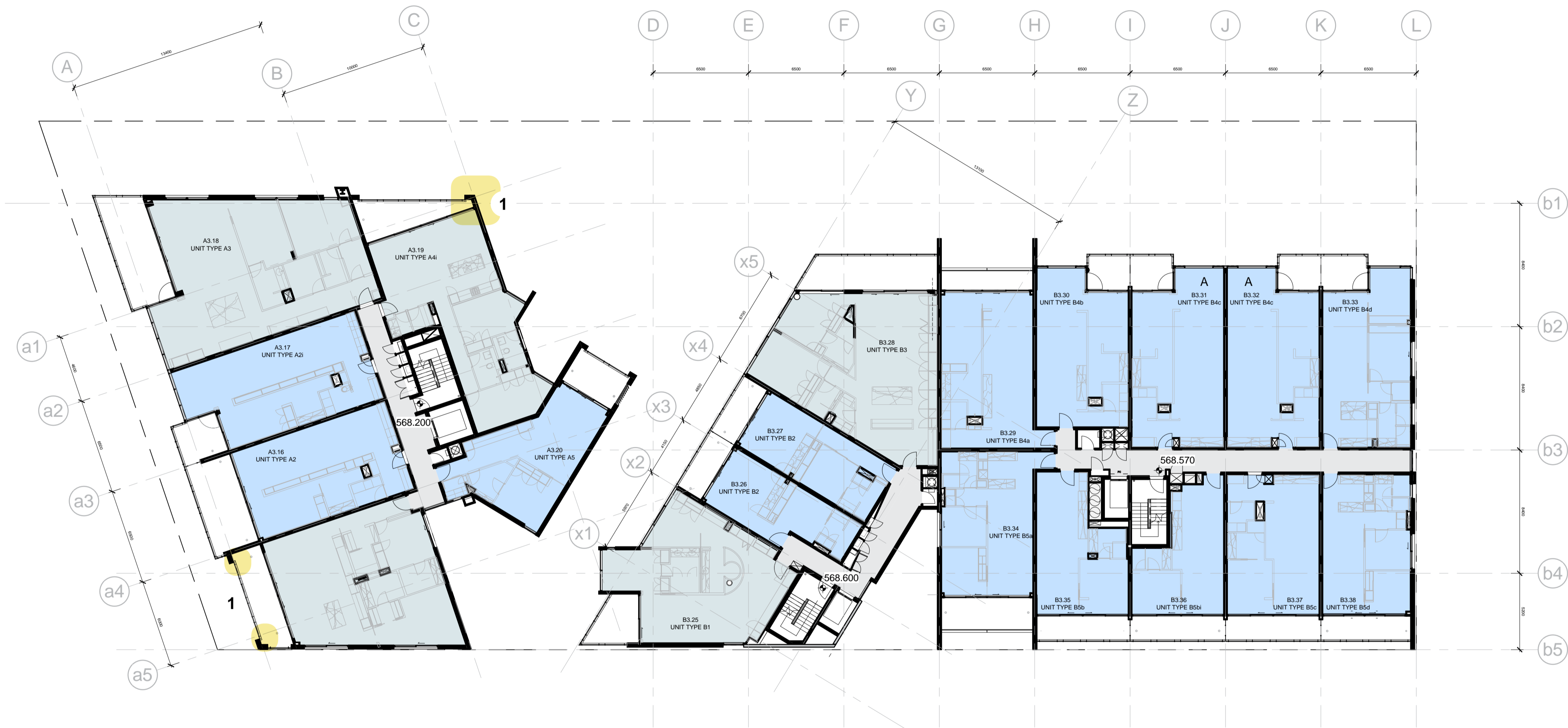
Areas have been determined by:

- Measurements to external face of exterior walls
- Measurements to centre line of common walls
- Measurements to centre line of balcony/terrace walls
- Balcony and Terrace areas excluded
- Open air plant area is excluded
- Storage compartments in basement are measured from internal face of basement wall and external face of 'cage'
- Storage within basement garage enclosures is excluded



LEVEL 2 GFA - 1630m<sup>2</sup>

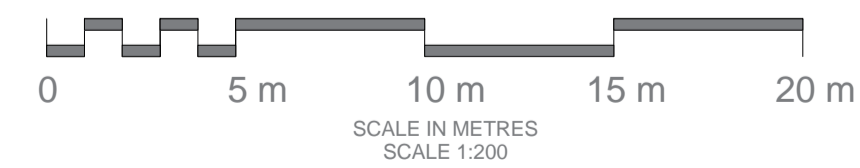
PLANNING AND DEVELOPMENT ACT 2007  
**APPROVAL AMENDED**  
 PURSUANT TO SECTION 198  
 IN RESPECT OF THE NOMINATED  
 AMENDMENTS ONLY  
 Delegate name MEENA RAMESH  
 Date 2/7/2012



1. FACADE ADJUSTMENT

Areas have been determined by:

- Measurements to external face of exterior walls
- Measurements to centre line of common walls
- Measurements to centre line of balcony/terrace walls
- Balcony and Terrace areas excluded
- Open air plant area is excluded
- Storage compartments in basement are measured from internal face of basement wall and external face of 'cage'
- Storage within basement garage enclosures is excluded



LEVEL 3 GFA - 1630m<sup>2</sup>