

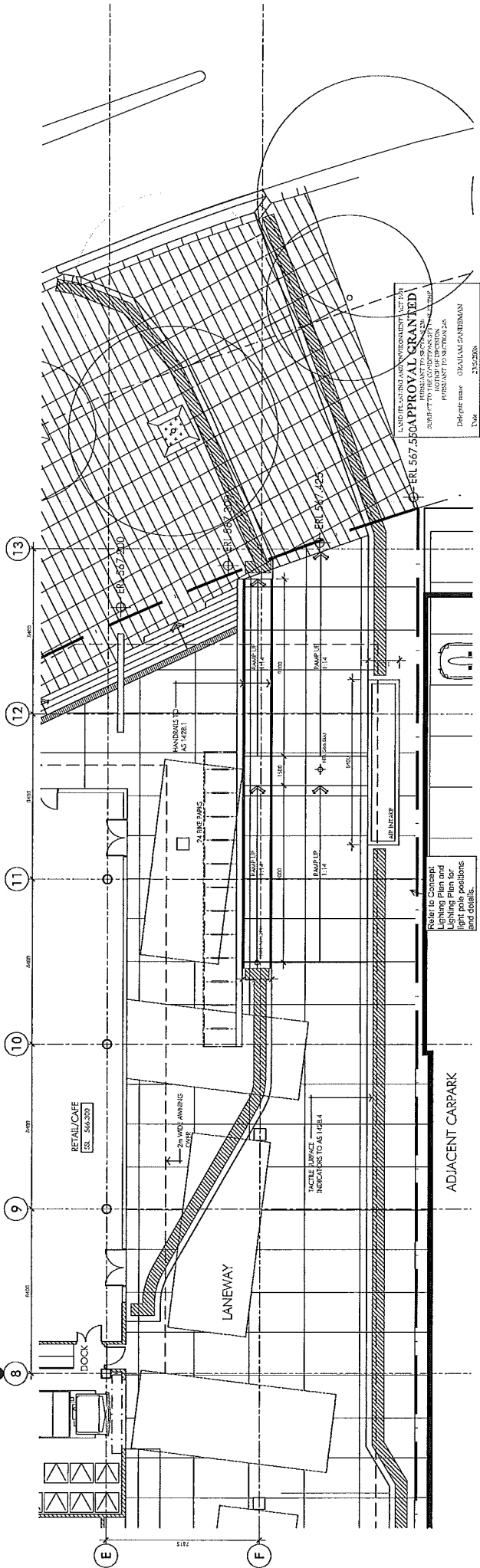
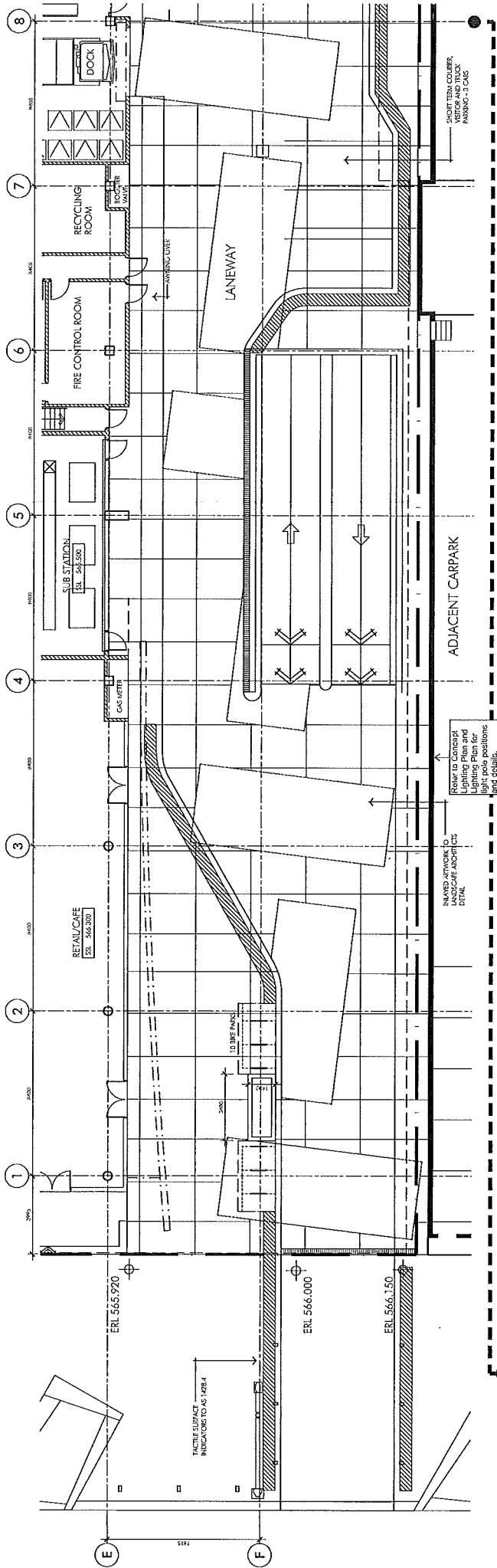
Freedom of Information Request Schedule – City, Section 68, Block 2

Please be aware that under the ACT Government's Online FOI Publication Policy, information released to you under this Freedom of Information Application may be released on the internet.

Personal information or business affairs information will not be made available under this policy. If you think the content of your request would contain such information, please inform the contact officer immediately.

A copy of the policy, with details about what information may be published on the internet, is available online at: http://www.cmd.act.gov.au/open_government/report/freedom_of_information_online

Ref No.	Number of Pages	Description	Date	Status	Reason for Exemption	Online release status
1.	1	Arts Lane Details – AR3042-DA-0512 Approved Plans	23/5/2008	Release	This document is considered relevant to the matters raised in the request and therefore may be released in full	Release
2.	1	Site Plan – AR-3042-DA-0001 Approval Amended	30/3/2010	Release	This document is considered relevant to the matters raised in the request and therefore may be released in full	Release
3.	1	Ground Floor Plan AR3042-DA-0111 Approval Amended	30/3/2010	Release	This document is considered relevant to the matters raised in the request and therefore may be released in full	Release
4.	1	Site Plan AR-3042-DA-0001 Original plan	Undated	Release	This document is considered relevant to the matters raised in the request and therefore may be released in full	Release
5.	1	Arts Lane Details AR-3042-DA-0512 Original Plans	Undated	Release	This document is considered relevant to the matters raised in the request and therefore may be released in full	Release



LAND MANAGEMENT APPROVALMENT 127/20
 ERL 567.500 APPROVAL GRANTED
 SUBJECT TO THE CONDITIONS OF THE APPROVALMENT
 REFERENT TO SECTION 24
 Delegate name: CRISTIAN COBURN
 Date: 23.2.2024

ARTS LANE DETAILS
 (SEE 110.000)
 AR-3042-DA-0512 (B)
 Date: 23.2.2024
 Drawing Number: 0512

© Copyright 2024 by rt
 All rights reserved.

Co Lab ANU Block 2 Section 68 City - Office Building
 marcus clarke street canberra

ANU logo

PLANNING AND DEVELOPMENT ACT 2007

APPROVAL AMENDED

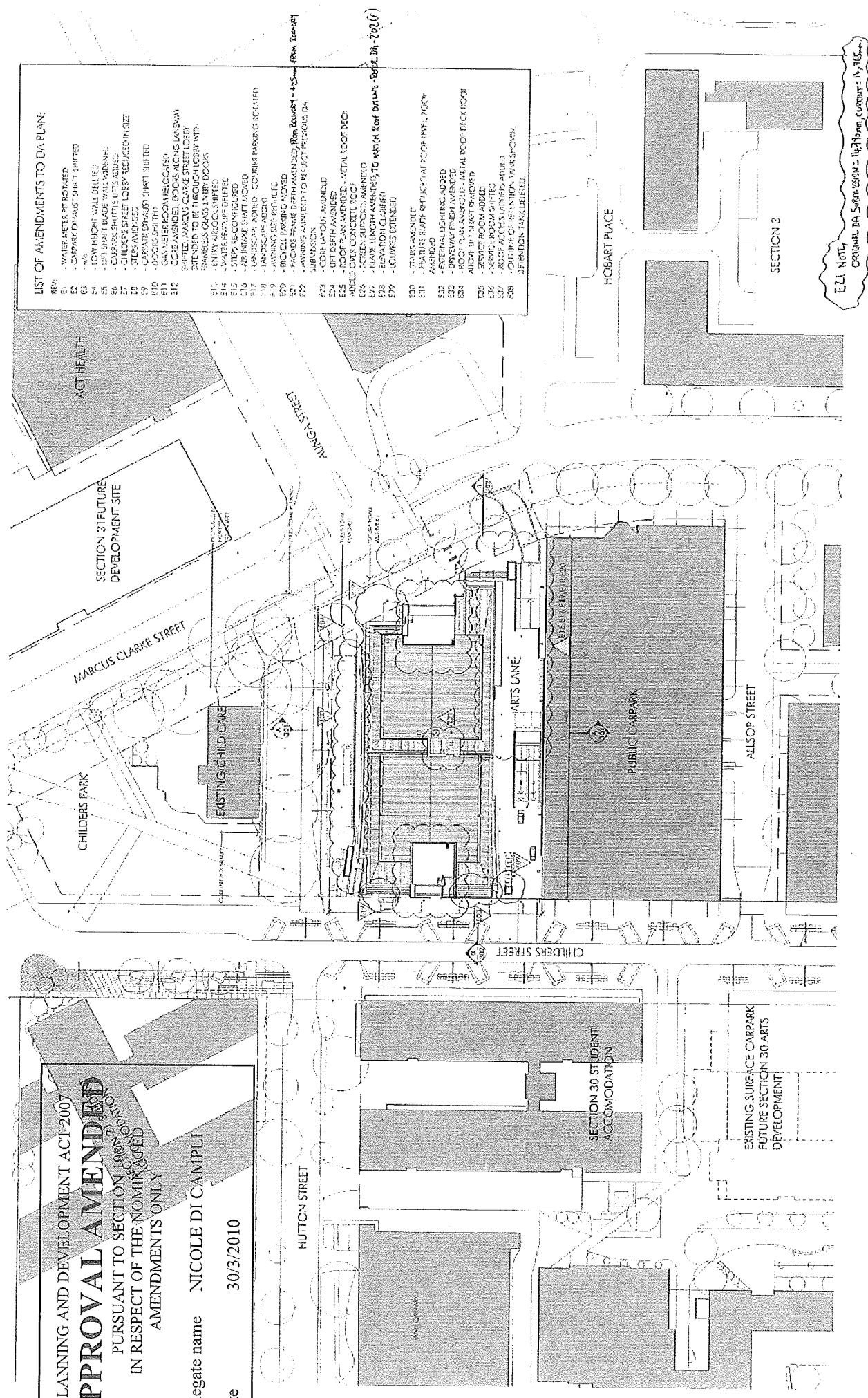
PURSUANT TO SECTION 180(1) OF THE ACT
IN RESPECT OF THE NOMINATED
AMENDMENTS ONLY

Delegate name NICOLE DI CAMPLI

Date 30/3/2010

LIST OF AMENDMENTS TO DA PLAN:

- E1 - WATER METRE PIT ROTATED
- E2 - CANOPY DIMENSIONS SHIRT SHIFTED
- E3 - W/6
- E4 - LOW HEIGHT WALL DELICED
- E5 - SHIRT SHIRT BLADE WALL WITH NEW
- E6 - CANOPY SHIFTS LEFTS ADDED
- E7 - CHILDREN'S STREET LOBBY REDUCED IN SIZE
- E8 - STEPS AMENDED
- E9 - CANOPY DIMENSIONS SHIRT SHIRT RED
- E10 - CANOPY DIMENSIONS SHIRT SHIRT RED
- E11 - CANOPY DIMENSIONS SHIRT SHIRT RED
- E12 - CORE AMENDED, DOORSE NICKEL GLASS ENTRY EXTENDED TO BE THROUGH LOBBY WITH SWANLICK CLASS ENTRY DOORS
- E13 - ENTRY AIRLOCKS SHIFTED
- E14 - WATER FEATURE DELETED
- E15 - STEPS RECONFIGURED
- E16 - AIRBORNE SHIRT MOVED
- E17 - LANDSCAPE AMENDED
- E18 - LANDSCAPE AMENDED
- E19 - BICYCLE PARKING MOVED
- E20 - BICYCLE PARKING MOVED
- E21 - FACED BRASS BENCH AMENDED, NEW BENCHES + 15mm from bench
- E22 - LANDING AMENDED TO REFLECT PREVIOUS DA SUBMISSION
- E23 - CORE LAYOUT AMENDED
- E24 - LIFT DEPTH AMENDED
- E25 - ROOF FLOOR AMENDED - METAL ROOF DECK
- E26 - ROOF FLOOR AMENDED - METAL ROOF DECK
- E27 - ROOF FLOOR AMENDED - METAL ROOF DECK
- E28 - TRAIL LENGTH AMENDED TO MATCH REFERENCE DA
- E29 - ELEVATION CLARIFIED
- E77 - COURSES EXTENDED
- E80 - STAIR AMENDED
- E81 - FEATURE BENCH REFLECTED AT ROOF RAMP, MOON
- E82 - ASPHALT
- E83 - EXTERNAL LIGHTING ADDED
- E84 - EXTERNAL LIGHTING ADDED
- E85 - EXTERNAL LIGHTING ADDED
- E86 - EXTERNAL LIGHTING ADDED
- E87 - EXTERNAL LIGHTING ADDED
- E88 - EXTERNAL LIGHTING ADDED
- E89 - EXTERNAL LIGHTING ADDED
- E90 - EXTERNAL LIGHTING ADDED
- E91 - EXTERNAL LIGHTING ADDED
- E92 - EXTERNAL LIGHTING ADDED
- E93 - EXTERNAL LIGHTING ADDED
- E94 - EXTERNAL LIGHTING ADDED
- E95 - EXTERNAL LIGHTING ADDED
- E96 - EXTERNAL LIGHTING ADDED
- E97 - EXTERNAL LIGHTING ADDED
- E98 - EXTERNAL LIGHTING ADDED
- E99 - EXTERNAL LIGHTING ADDED
- E100 - EXTERNAL LIGHTING ADDED



E21 Note:
CORUMAR DA 5,800,688M - 10/2/10am, Corumare 14,765

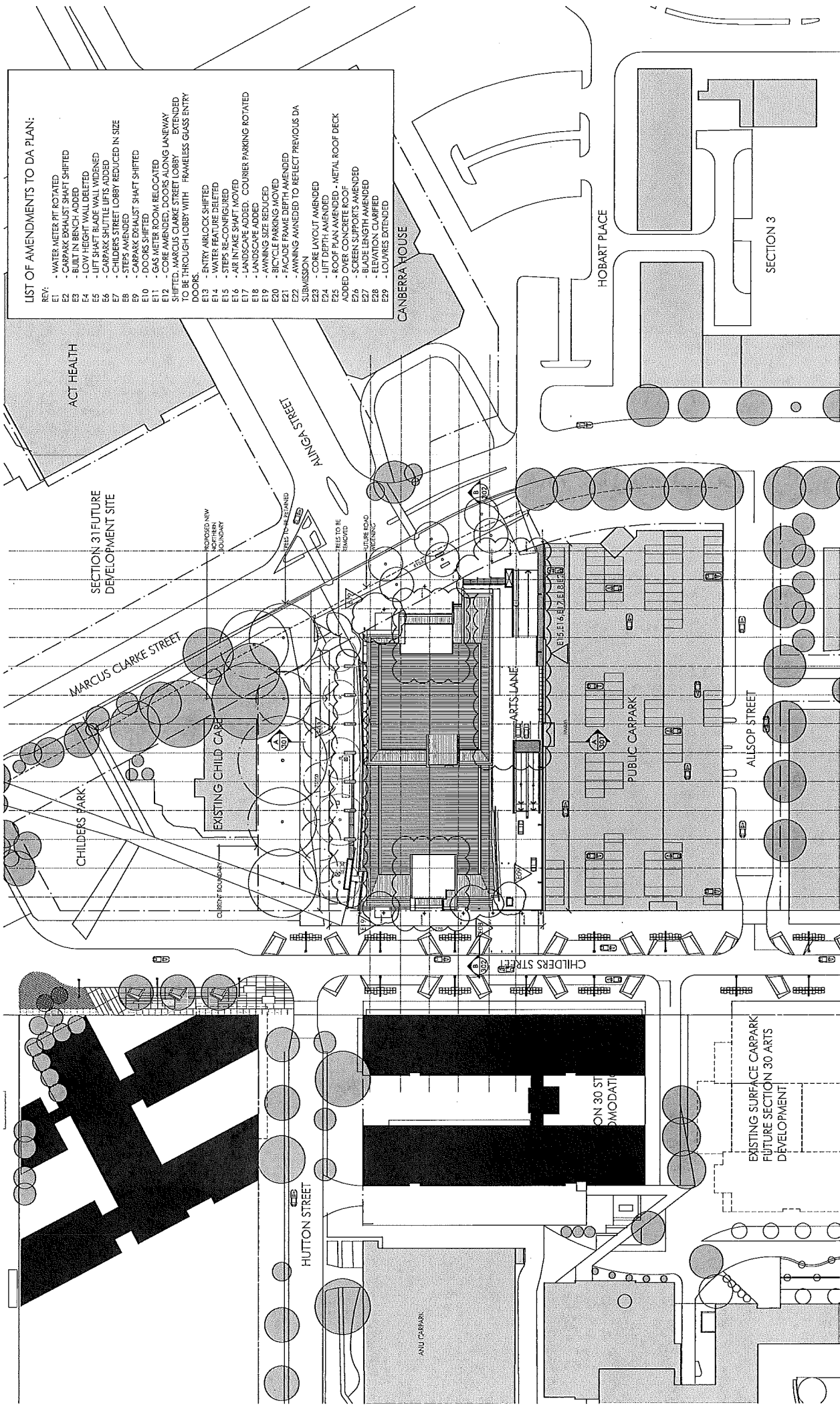
Co Lab
ANU Block 2 Section 68 City - Office Building
marcus clarke street canberra

Alba
ARCHITECTS


neillejohnston

SITE PLAN
Scale 1:500 (A1)
15 February 2010

AR-3042-DA-0001 (F)



- LIST OF AMENDMENTS TO DA PLAN:**
- REV: - WATER METER PIT ROTATED
 - E1 - CARPARK EXHAUST SHAFT SHIFTED
 - E2 - LOW HEIGHT WALL DELETED
 - E3 - LOW HEIGHT WALL DELETED
 - E4 - LIFT SHAFT BRIDE WALL WIDENED
 - E5 - CARPARK SHUTTLE LIFTS ADDED
 - E6 - CHILDERS STREET LOBBY REDUCED IN SIZE
 - E7 - STEPS AMENDED
 - E8 - CARPARK EXHAUST SHAFT SHIFTED
 - E9 - DOORS SHIFTED
 - E10 - GAS METER ROOM RELOCATED
 - E11 - CORE AMENDED, DOORS ALONG LANEWAY SHIFTED, MARCUS CLARKE STREET LOBBY EXTENDED TO BE THROUGH LOBBY WITH FRAMELESS GLASS ENTRY DOORS.
 - E12 - ENTRY AIRLOCK SHIFTED
 - E13 - WATER FEATURE DELETED
 - E14 - STEPS RECONFIGURED
 - E15 - AIR RAKE AMENDED
 - E16 - LANDSCAPE ADDED, COUNNER PARKING ROTATED
 - E17 - LANDSCAPE ADDED
 - E18 - AVINING SIZE REDUCED
 - E19 - RICYCLE PARKING MOVED
 - E20 - FACADE FRAME DEPTH AMENDED
 - E21 - AWNING AMENDED TO REFLECT PREVIOUS DA SUBMISSION
 - E22 - CORE LAYOUT AMENDED
 - E23 - LIFT DEPTH AMENDED
 - E24 - ROOF PLAN AMENDED - METAL ROOF DECK ADDED OVER CONCRETE ROOF
 - E25 - SCRER SUPPORTS AMENDED
 - E26 - BLADE LENGTH AMENDED
 - E27 - ELEVATION CLARIFIED
 - E28 - LOUVRES EXTENDED
 - E29 - LOUVRES EXTENDED



Alba
CAPITAL PARTNERS LIMITED

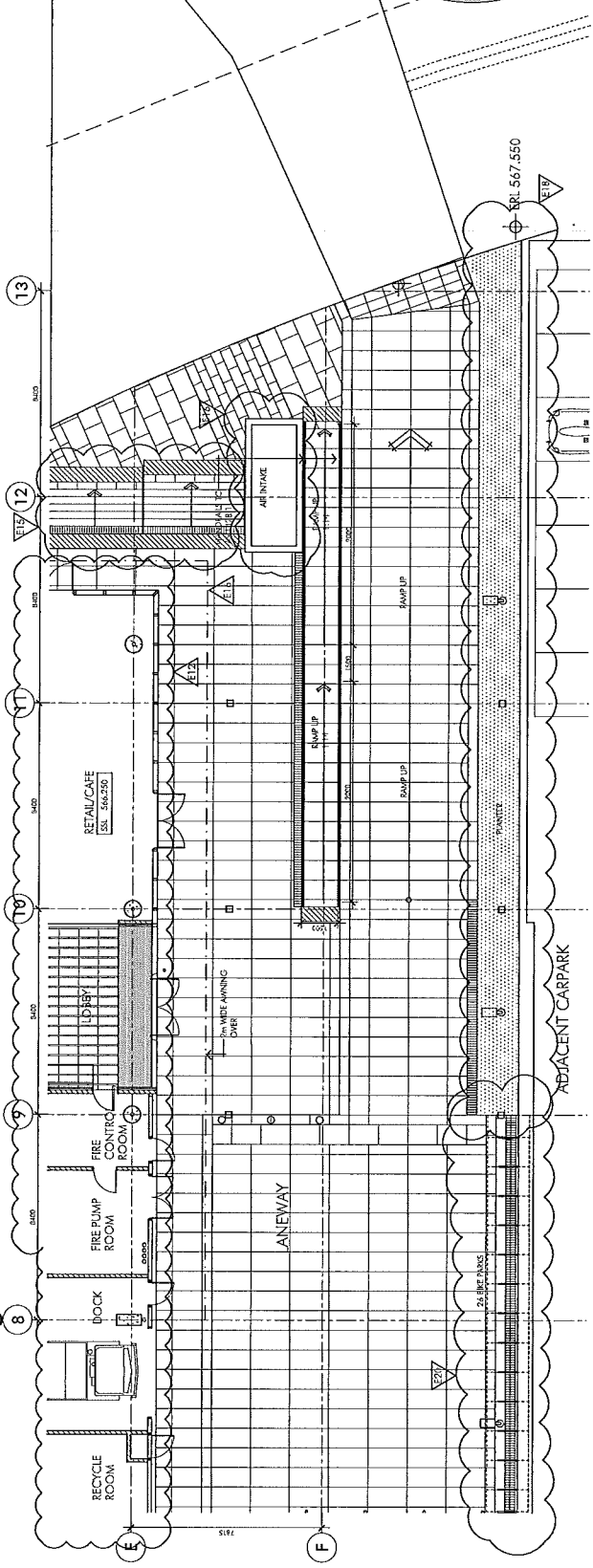
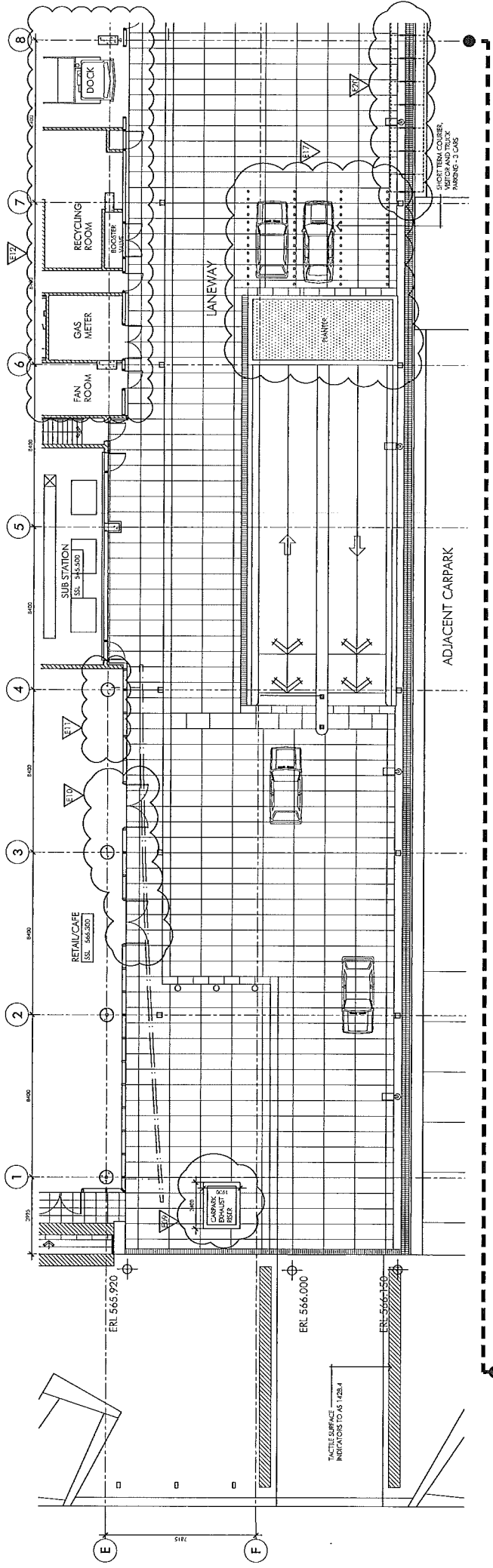
Co Lab ANU Block 2 Section 68 City - Office Building
marcus clarke street canberra

rt
netilionibe

SITE PLAN
Scale: 1:500 (A1)
DATE: 01/11/2017
PROJECT: AR-3042-DA-0001 (E)

No.	Name	Date	Scale	Author	Number
1	PRELIMINARY SITE PLAN	14/02/17	1:500	RT	01/17/01
2	REVISED PRELIMINARY SITE PLAN	20/02/17	1:500	RT	01/17/02
3	REVISED PRELIMINARY SITE PLAN	21/02/17	1:500	RT	01/17/03
4	REVISED PRELIMINARY SITE PLAN	21/02/17	1:500	RT	01/17/04
5	REVISED PRELIMINARY SITE PLAN	21/02/17	1:500	RT	01/17/05

© Copyright 2017 Netilionibe Pty Ltd



LIST OF AMENDMENTS TO DA PLAN:

- REV: - WATER METER PIT ROTATED
- E1 - CARPARK EXHAUST SHAFT SHIFTED
- E2 - CARPARK EXHAUST SHAFT ADDED
- E3 - LOW HEIGHT WALL ADDED
- E4 - LIFT SHAFT BLADE WALL WIDENED
- E5 - CARPARK SHUTTLE LIFTS ADDED
- E6 - CHILDERS STREET LOBBY REDUCED IN SIZE
- E7 - STEPS AMENDED
- E8 - CARPARK EXHAUST SHAFT SHIFTED
- E9 - DOORS SHIFTED
- E10 - GAS METER ROOM LOCATED
- E11 - CORE AMENDED, DOORS ALONG LANEWAY SHIFTED, MARCUS CLARKE STREET LOBBY EXTENDED TO BE THROUGH LOBBY WITH FRAMELESS GLASS ENTRY DOORS.
- E12 - ENTRY AIRLOCK SHIFTED
- E13 - WATER FEATURE DELETED
- E14 - STEPS RECONFIGURED
- E15 - AIR INTAKE SHAFT MOVED
- E16 - AIR INTAKE SHAFT ADDED
- E17 - LANDSCAPE ADDED, COURIER PARKING ROTATED
- E18 - LANDSCAPE ADDED
- E19 - AWNING SIZE REDUCED
- E20 - BICYCLE PARKING MOVED
- E21 - FACADE FRAME DEPTH AMENDED
- E22 - AWNING AMENDED TO REFLECT PREVIOUS DA SUBMISSION
- E23 - CORE LAYOUT AMENDED
- E24 - LIFT DEPTH AMENDED
- E25 - ROOF PLAN AMENDED - METAL ROOF DECK ADDED OVER CONCRETE ROOF
- E26 - SCREEN SUPPORTS AMENDED
- E27 - BLADE LENGTH AMENDED
- E28 - ELEVATION CLARIFIED
- E29 - LOUVRES EXTENDED

Alba
CAPITAL RESOURCES LIMITED

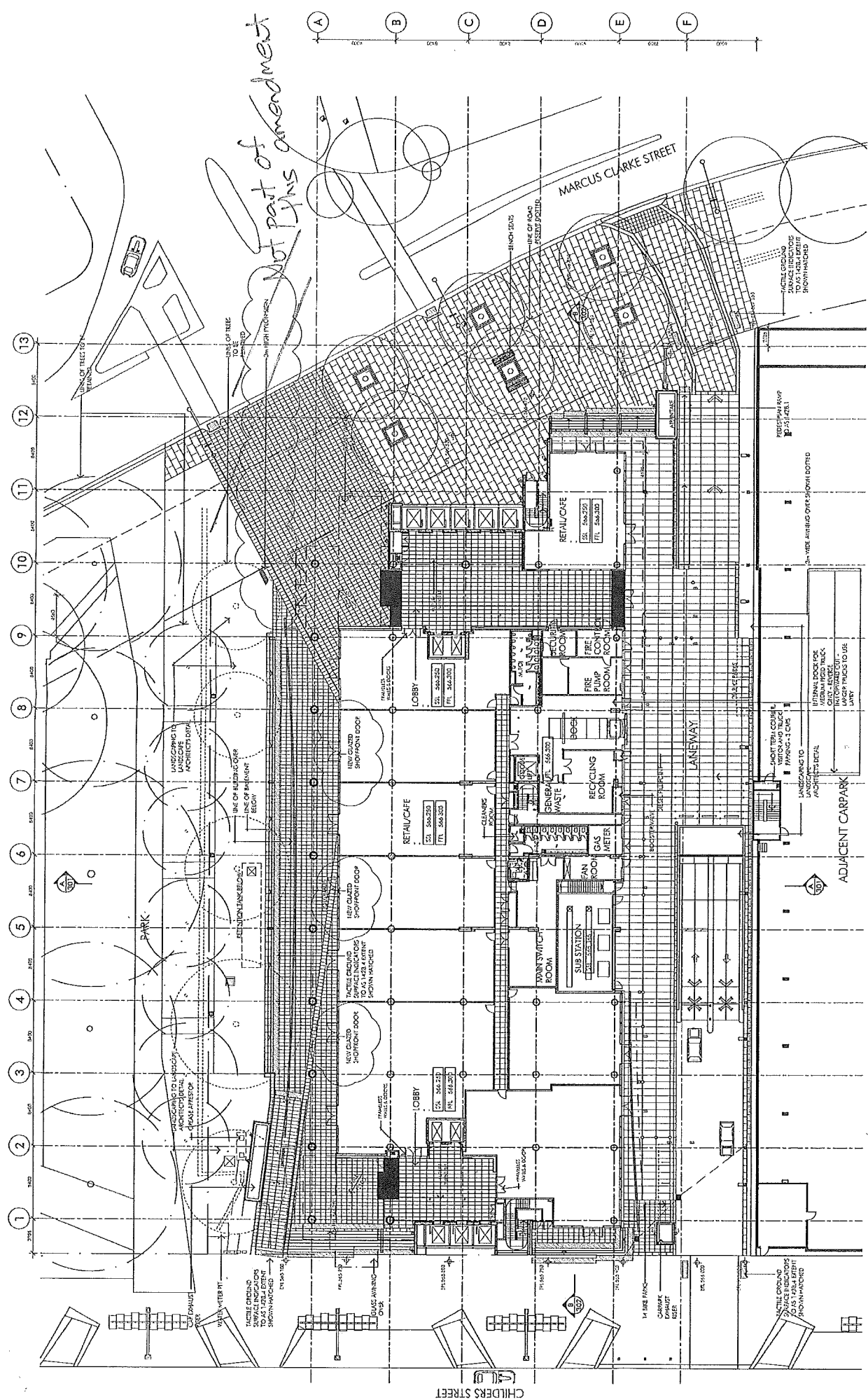
Co Lab ANU Block 2 Section 68 City - Office Building
marcus clarke street canberra

ARTS LANE DETAILS
Drawn 1/10/2011
on 10/10/2011
AR-3042-DA-0512 (E)


nettleonlife

Rev	Description	Date	By	Check

© Copyright (c) 2011 nettleonlife.com.au




Not part of amendment
PINS amendment



ALBA
ARCHITECTS

Co Lab ANU Block 2 Section 68 City - Office Building
marcus clarke street canberra

GROUND FLOOR PLAN
scale 1:200 (A1)
17 August 2010
AR-3674-DA-0111 (A)



netlatonitibe

Drawn	14
Checked	12/02/10
Scale	1:200
Date	17/08/10
Author	14/08/10

© 2010 Alba Architects Pty Ltd. All rights reserved.